



Southern



New England

September 2017

The moon eclipsed the sun on a sunny afternoon this month of August. For most of the month, the sun shined brightly and we reported a record exceeding 5000 Daily Reports of zero, however, some of you did find the variability of precipitation that the summertime downpours can bring.

August was also a month for getting away and getting together. A time to get away from our daily lives. A time to get together with those we know that live away from us.

As this Water Year comes to a close, we are pleased to see so many of you are reporting more than 80% of the days. After this Water Year closes at the end of September and the new one begins, we will be issuing Certificates for those that reported more than 80% of the days, 290 days, and that number may be close to 200 observers. Well done by many of you.

In this edition, we recognize those that have submitted 1000 Daily Reports recently, more about Comments with the rain in eastern Cape Cod that even caught Nolan's eye, it's not too early to talk about Snow reporting, Map of the Month is Norfolk County MA, and before a new map of reports comes out soon, another mention about Condition Monitoring Reports.

Let us read on.

1000 Daily Reports

Congratulations to these 19 observers from our three states who have passed the milestone of 1000 Daily Reports within the past few months.

Those observers are

MA-MD-25	Ayer 0.1 SW
MA-WR-28	Berlin 1.3 WSW
MA-HS-8	Williamsburg 1.2 WSW
CT-HR-22	East Hartford 1.3 E
MA-BE-11	Great Barrington 3.0 N
MA-HS-7	Plainfield 2.2 SW
MA-MD-36	Townsend 2.6 S
MA-WR-25	Holden 2.0 ESE
MA-MD-42	Holliston 0.8 S
MA-BA-37	Orleans 0.8 W
MA-WR-18	Northborough 0.6 SSE
MA-ES-10	Andover 1.5 W
MA-MD-44	Medford 1.2 W
RI-PR-33	Greenville 0.7 NNW
CT-HR-11	West Hartford 2.7 SSE
CT-LT-7	Litchfield 2.3 NNE
MA-MD-45	Wilmington 1.5 NE
MA-HS-10	Northampton 1.6 NE
CT-WN-8	Moosup 1.7 NE

Leaving for the Winter?

If you enjoy our area for the warm weather months, fall colors, and leave the area before the cold and snow sets in, please send a message to Joe joseph.dellicarpini@noaa.gov with your stop and return dates.

We miss you when you stop reporting and would like to know if it because of your travels.

If you want a 2nd reporting station... do let us know of that too! We'd like to see you reporting all year round from wherever you are in our network.

We will keep your travel plans confidential.

Observation Notes - Comments

Friday night, August 18, the rains came to the east end of Cape Cod. Let the observers tell you how it was through their Comments.

8/19/2017	MA-BA-30	Eastham 0.6 SW	8.25	AMAZING !!!!! Torrential rain during the night. WOW! This is my Cocorahs record rainfall. I brought the entire cylinder indoors, removed the full 1 inch cylinder, then marked the outer cylinder in case any water was spilled when measuring the amount.	View
8/19/2017	MA-BA-12	Orleans 1.1 E	7.55	Very light rain during day, torrential rain with thunder and lightning overnight. Now cloudy, humid, 75F.	View
8/19/2017	MA-BA-51	Orleans 3.0 S	7.04	Started lightly around 330pm. Didn't get heavy until after 900pm. Was very heavy from 1000pm on. Must have stopped around 345 or 400am.	View
8/19/2017	MA-BA-22	Yarmouth 0.9 NNW	5.06	yips, I could not believe what I saw, my outer tub 3/4 full	View
8/19/2017	MA-BA-43	Chatham 0.4 WSW	4.62	overnight severe thunder storm with heavy downpouring, and localized squall conditions; fruit, flower, and vegetable garden damage	View
8/19/2017	MA-BA-64	Sandwich 1.5 SSE	4.02	Very heavy, frequent, short downpours, primarily after nightfall interspersed with steady, moderate to heavy rain. Occasional thunder and lightning	View

				between approx. 10th PM and midnight 2017-08-18. Measured twice, checked arithmetic and photographed the gauge. Measurement is correct.	
8/19/2017	MA-BA-27	Wellfleet 0.7 NW	3.72	Torrential downpours through the night!	View

Whether you receive 3.00” or 0.03”, a trace, 0.01”, or any amount, Comments are valuable to your own records as well as to everyone else. Well done by the Cape Cod observers during this event.

With many of you making Comments, the event does read like a story, with each observer writing a sentence or paragraph, with the mentions of intensities and timings.

Keep making Comments every day you report precipitation. We want to read your story, learn from what happened, and verify your amount.

Snow Reporting

The leaves haven’t changed colors. But the seasons are about to change.

October 1 starts another snow reporting season. If you haven’t gotten into the habit already, please fill out the Snow Section of your Daily Report every day. Until the snowflakes start flying, change those NA’s to 0’s every day. You define where the snow is and where it is not.


Even when it rains. Last winter and this summer, observers will report the rainfall as precip and not fill out the Snow Section. When the dry weather returns, the Snow Section is filled out with 0’s. Please, fill out the Snow Section every day that you can, rain or shine. Zeros are valuable and easy to enter when there is no snow.

In October and November, more will be mentioned about snow measuring and reporting, being safe and which values to report where.


You are the Rulers of the Snow.

Detail and Summary for August 2017

From the National Weather Service (NWS) Climate sites for August 2017.



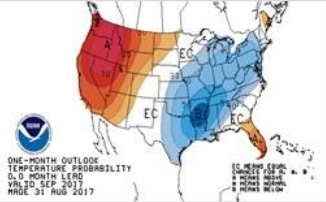
August 2017 Regional Weather Summary




Location	Station ID	Aug 2017 Precip	Aug departure from normal	Jun-Jul- Aug Precip	3 month departure from normal	Mar-Aug Precip	6 month departure from normal
Pittsfield MA	PSF	4.59"	0.50"	12.01"	-0.73"	25.21"	1.03"
Bridgeport CT	BDR	3.81"	-0.15"	8.75"	-2.28"	23.40"	0.39"
Hartford CT	BDL	2.66"	-1.27"	12.84"	0.38"	25.13"	0.98"
Worcester MA	ORH	1.59"	-2.12"	8.21"	-3.92"	22.94"	-1.71"
Providence RI	PVD	1.46"	-2.14"	9.18"	-1.35"	27.02"	3.57"
Boston MA	BOS	1.58"	-1.77"	10.46"	0.00"	23.82"	1.81"

September 2017 Outlook

Air Temperature



Precipitation



A = Above normal, B = Below normal,
EC = Equal chances of above/below normal

August Highlights

- Count of 2"+ Daily Reports = 50
- Last Aug 2"+ Daily Reports = 16

Did You Know?

"Dew on the Gauge" at obs time occurred 18 days in August.
Another value of making
Comments!

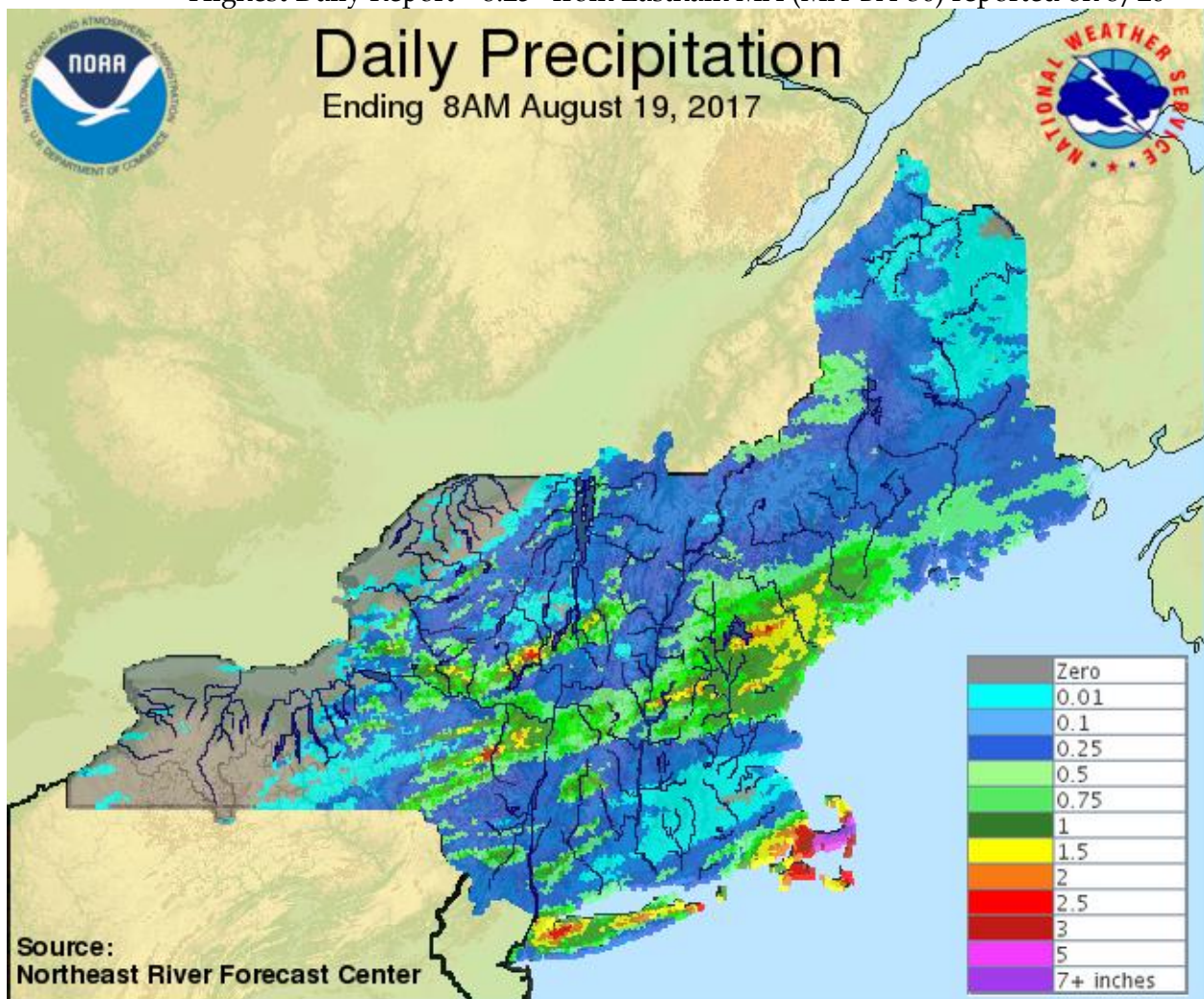
A dry month, but it was drier for some more so than for the others.

The more noteworthy rains came to the central part of CT and around I-495 west of Boston for August 3rd, scattered areas of Hartford County CT for the 5th, scattered areas of CT and the western part of Worcester and Middlesex MA counties for the 6th, some for Cape Cod for the 8th, Franklin County and Pittsfield MA for the 15th, the large rains for Cape Cod for the 19th, Litchfield CT and the northern part of Massachusetts for the 23rd, and Southern Rhode Island, Cape Cod and the Islands for the 30th.

Take in this next section of your reports with appreciation of your efforts.

From your reports for August 2017

Observers reporting	314
Reported all 31 days	138
Completed by Multi-Day Reports	53
Missing 1 or 2 reports	44
Daily Reports	7751
Zero Reports	5043
Non-Zero Reports	2708
Daily Comments	1101
Multi-Day Reports	169
Condition Monitoring Reports	21
Significant Weather Reports	8
Hail Reports	1
Snowfall Reports	3984
Snow Depth Reports	1166
Highest Daily Report	8.25" from Eastham MA (MA-BA-30) reported on 8/20



We had the lowest of monthly totals. We had the highest of monthly totals. And those differences were not far from each other in eastern Massachusetts.

Because it was rain free around the beginning and end of the month, generosity was given to 10 stations with Multi-Day Reports that overlapped the beginning or end of the month.

90 different stations submitted Multi-Day Reports and each of those stations were looked at for complete reporting.

Have no missing reports for a month, and longer, and your reports have a value that goes beyond this newsletter. Strive not to miss any days.

For a viewing explanation on Watersheds, the CoCoRaHS animated video is on [YouTube](#).

Take this in. See the similarities and the differences and read the story that these values tell.

Watershed	Watershed Name	Station	Station Name	Precip
01060003	Piscataqua-Salmon Falls			
0106000310	Hampton River - Frontal Atlantic Ocean	MA-ES-1	Salisbury 3.7 NW	1.46"
01070004	Nashua			
0107000401	North Nashua River	MA-WR-8	Fitchburg 1.6 SSW	3.28"
0107000401	North Nashua River	MA-WR-52	Fitchburg 2.3 N	5.89"
0107000401	North Nashua River	MA-WR-22	Fitchburg 2.0 NNE	6.48"
0107000401	North Nashua River	MA-WR-13	Leominster 1.5 S	2.69"
0107000402	Headwaters Nashua River	MA-WR-56	Sterling 4.3 NW	2.99"
0107000402	Headwaters Nashua River	MA-MD-25	Ayer 0.1 SW	2.13"
0107000403	Squannacook River	MA-MD-47	West Townsend 0.5 W	3.63"
01070005	Concord			
0107000501	Sudbury River	MA-MD-90	Marlborough 0.1 SW	1.69"
0107000501	Sudbury River	MA-MD-89	Sudbury 3.6 W	1.93"
0107000501	Sudbury River	MA-MD-75	Sherborn 2.3 WNW	1.65"
0107000501	Sudbury River	MA-MD-88	Wayland 2.1 SSE	1.57"
0107000502	Concord River	MA-WR-28	Berlin 1.3 WSW	1.91"
0107000502	Concord River	MA-WR-18	Northborough 0.6 SSE	1.16"
0107000502	Concord River	MA-WR-42	Northborough 2.3 N	1.07"
0107000502	Concord River	MA-WR-55	Harvard 2.1 S	2.15"
0107000502	Concord River	MA-MD-83	Boxborough 1.4 SSE	3.20"
0107000502	Concord River	MA-MD-12	Acton 1.3 SW	3.63"

0107000502	Concord River	MA-MD-51	Maynard 0.7 ESE	2.27"
0107000502	Concord River	MA-MD-53	Acton 4.0 ENE	2.27"
0107000502	Concord River	MA-MD-62	Chelmsford 1.2 E	1.19"
01070006	Merrimack River			
0107000611	Spicket River	MA-ES-38	Methuen 1.6 NNE	1.88"
0107000612	Stony Brook - Merrimack River	MA-MD-93	Westford 1.5 SSW	1.48"
0107000613	Shawsheen River	MA-MD-52	Lexington 0.6 SW	1.06"
0107000613	Shawsheen River	MA-MD-96	Lexington 0.3 NE	0.85"
0107000614	Powwow River - Merrimack River	MA-ES-3	Haverhill 3.6 WNW	2.06"
0107000614	Powwow River - Merrimack River	MA-ES-20	Haverhill 0.7 N	1.97"
01080201	Middle Connecticut			
0108020106	Manhan River - Connecticut River	MA-HS-8	Williamsburg 1.2 WSW	2.05"
0108020106	Manhan River - Connecticut River	MA-HS-10	Northampton 1.6 NE	3.28"
0108020106	Manhan River - Connecticut River	MA-FR-12	Sunderland 1.3 SE	2.57"
01080202	Miller			
0108020202	Lower Millers River	MA-WR-40	Gardner 1.4 SSW	3.70"
01080203	Deerfield			
0108020305	Lower Deerfield River	MA-FR-17	Buckland 1.8 ESE	5.31"
0108020305	Lower Deerfield River	MA-FR-13	Conway 2.9 NW	4.04"
0108020305	Lower Deerfield River	MA-FR-10	Conway 0.9 SW	2.58"
01080204	Chicopee			
0108020402	Ware River	MA-WR-54	Barre 1.4 NNE	5.03"
01080205	Lower Connecticut			
0108020501	Mill River - Connecticut River	CT-HR-5	Enfield 1.5 SE	2.41"
0108020502	Scantic River	MA-HD-20	Wilbraham 3.7 SSW	2.37"
0108020502	Scantic River	CT-TL-15	Central Somers 0.3 N	2.13"
0108020503	Park River	CT-HR-39	Farmington 1.6 SW	3.48"
0108020503	Park River	CT-HR-11	West Hartford 2.7 SSE	2.29"
0108020504	Hockanum River	CT-TL-16	Vernon 3.5 NNE	2.16"
0108020504	Hockanum River	CT-TL-13	Crystal Lake 1.2 W	2.31"
0108020505	Roaring Brook - Connecticut River	CT-HR-6	Wethersfield 1.2 WSW	3.13"
0108020505	Roaring Brook - Connecticut River	CT-HR-50	Hartford 1.5 S	2.25"
0108020505	Roaring Brook - Connecticut River	CT-HR-22	East Hartford 1.3 E	2.71"
0108020505	Roaring Brook - Connecticut River	CT-HR-40	Glastonbury Center 4.0 ENE	2.41"
0108020506	Mattabesset River	CT-HR-15	Southington 3.0 E	3.54"
0108020506	Mattabesset River	CT-MD-12	Middletown 3.1 WNW	3.74"
01080206	Westfield			
0108020601	Headwaters Westfield River	MA-HS-7	Plainfield 2.2 SW	5.37"
0108020601	Headwaters Westfield River	MA-HS-14	Plainfield 2.4 ESE	3.73"
0108020603	Outlet Westfield River	MA-HD-17	Southwick 2.5 WSW	3.80"
01080207	Farmington			

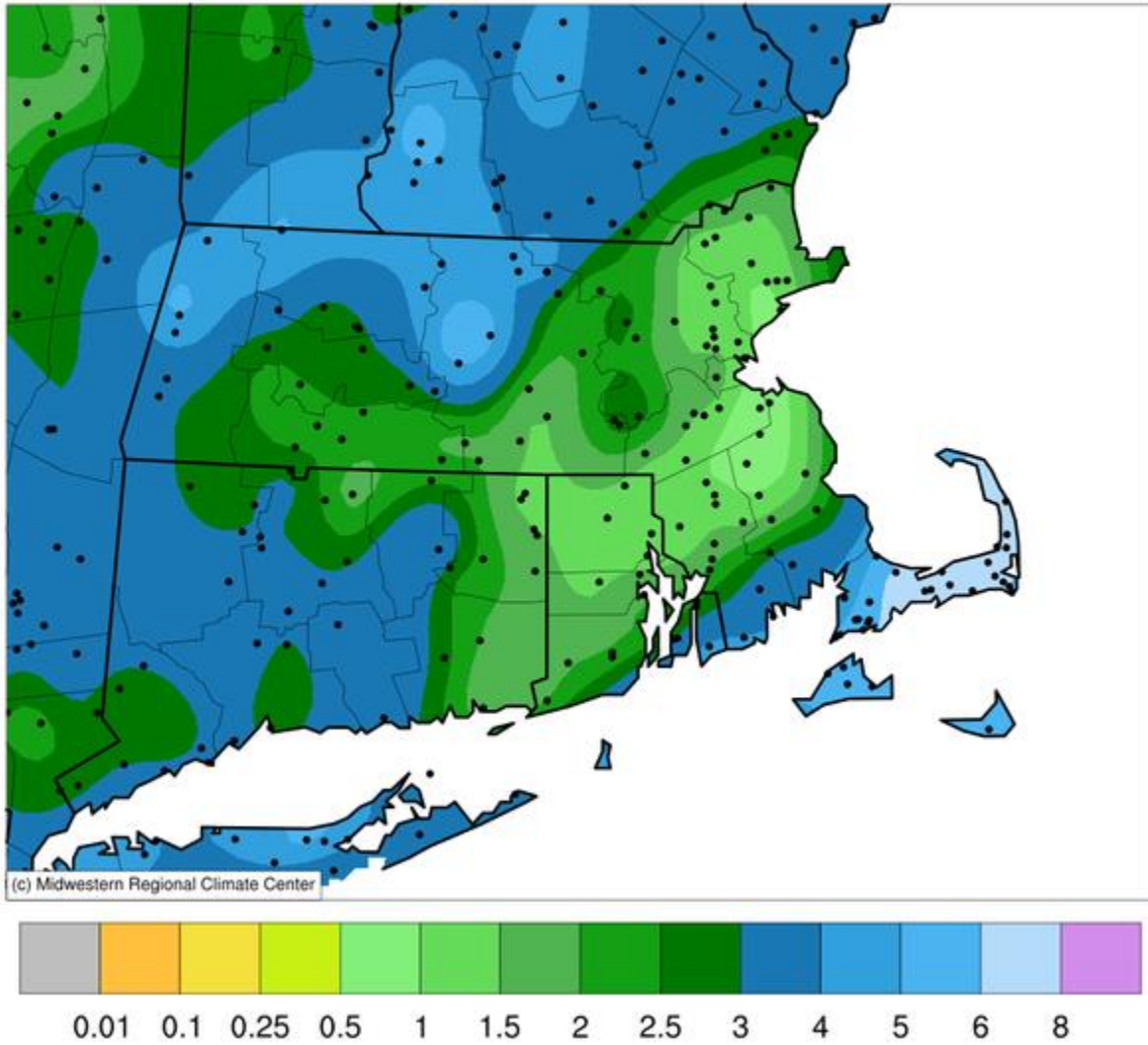
0108020701	Still River	CT-LT-15	Colebrook 1.0 NE	3.72"
0108020702	West Branch Farmington River	MA-BE-4	Becket 5.6 SSW	2.27"
0108020702	West Branch Farmington River	CT-LT-18	New Hartford Center 1.5 N	2.93"
0108020704	Headwaters Farmington River	CT-LT-9	New Hartford Center 3.2 SW	2.99"
0108020704	Headwaters Farmington River	CT-HR-24	Collinsville 0.9 NW	2.91"
0108020704	Headwaters Farmington River	CT-HR-28	North Canton 0.8 SSW	4.96"
0108020705	Salmon Brook	CT-HR-8	North Granby 1.3 ENE	3.65"
0108020706	Outlet Farmington River	CT-HR-35	Weatogue 0.7 E	2.36"
01090001	Charles			
0109000102	Ipswich River	MA-MD-85	Wilmington 2.2 WNW	1.53"
0109000102	Ipswich River	MA-MD-45	Wilmington 1.5 NE	1.22"
0109000102	Ipswich River	MA-ES-12	Boxford 2.4 S	1.10"
0109000102	Ipswich River	MA-ES-2	Beverly 2.8 NW	1.00"
0109000103	Essex River - Frontal Atlantic Ocean	MA-ES-41	Danvers 0.8 ESE	1.02"
0109000103	Essex River - Frontal Atlantic Ocean	MA-ES-22	Rockport 1.0 E	0.36"
0109000104	Saugus River - Frontal Broad Sound	MA-MD-81	Wakefield 0.5 NNW	1.08"
0109000104	Saugus River - Frontal Broad Sound	MA-ES-8	Marblehead 0.8 SW	0.61"
0109000105	Mystic River - Frontal Boston Harbor	MA-MD-54	Belmont 0.3 SE	1.10"
0109000105	Mystic River - Frontal Boston Harbor	MA-MD-44	Medford 1.2 W	0.81"
0109000105	Mystic River - Frontal Boston Harbor	MA-MD-11	Cambridge 0.9 NNW	0.97"
0109000105	Mystic River - Frontal Boston Harbor	MA-SF-10	Chelsea 0.8 N	1.77"
0109000106	Upper Charles River	MA-WR-1	Milford 2.3 NNW	2.64"
0109000106	Upper Charles River	MA-MD-55	Holliston 0.7 W	3.53"
0109000106	Upper Charles River	MA-MD-42	Holliston 0.8 S	3.59"
0109000107	Lower Charles River - Frontal Boston Harbor	MA-MD-74	Somerville 0.7 SSE	1.10"
0109000107	Lower Charles River - Frontal Boston Harbor	MA-SF-1	Boston 0.5 WSW	1.06"
0109000108	Neponset River - Frontal Boston Harbor	MA-NF-1	Norwood 1.3 NW	1.43"
0109000109	Whitmans Pond - Frontal Boston Harbor	MA-NF-32	Quincy 1.8 WSW	1.10"
0109000109	Whitmans Pond - Frontal Boston Harbor	MA-NF-5	Weymouth 0.5 NW	0.38"
0109000109	Whitmans Pond - Frontal Boston Harbor	MA-PL-36	Hingham 0.8 ESE	0.35"
01090002	Cape Cod			
0109000201	North River - Frontal Massachusetts Bay	MA-PL-5	Kingston 3.3 WNW	0.92"
0109000202	Cape Cod	MA-BA-8	Falmouth 1.8 WSW	6.04"
0109000202	Cape Cod	MA-BA-2	Falmouth 3.1 NNW	3.99"
0109000202	Cape Cod	MA-BA-57	Falmouth 5.7 N	3.95"
0109000202	Cape Cod	MA-BA-17	East Falmouth 1.2 WNW	3.92"
0109000202	Cape Cod	MA-BA-3	Falmouth 3.0 E	5.34"
0109000202	Cape Cod	MA-BA-11	East Falmouth 1.4 ESE	8.35"
0109000202	Cape Cod	MA-BA-18	Waquoit 0.6 SSW	5.28"
0109000202	Cape Cod	MA-BA-47	Mashpee 2.4 WSW	5.02"
0109000202	Cape Cod	MA-BA-45	Sandwich 0.9 NNE	4.47"

0109000202	Cape Cod	MA-BA-10	East Sandwich 2.3 SE	6.66"
0109000202	Cape Cod	MA-BA-59	Barnstable 3.6 W	7.71"
0109000202	Cape Cod	MA-BA-22	Yarmouth 0.9 NNW	7.38"
0109000202	Cape Cod	MA-BA-33	Brewster 1.5 ESE	8.95"
0109000202	Cape Cod	MA-BA-52	Truro 0.8 E	3.46"
0109000202	Cape Cod	MA-BA-36	Harwich 2.6 ENE	8.22"
0109000202	Cape Cod	MA-BA-37	Orleans 0.8 W	9.47"
0109000202	Cape Cod	MA-BA-51	Orleans 3.0 S	8.91"
0109000202	Cape Cod	MA-BA-12	Orleans 1.1 E	9.87"
0109000202	Cape Cod	MA-BA-30	Eastham 0.6 SW	10.52"
0109000202	Cape Cod	MA-BA-65	Chatham 0.2 SSE	6.13"
0109000203	Mattapoisett River - Frontal Buzzards Bay	MA-PL-19	Rochester 1.2 NNW	3.97"
0109000203	Mattapoisett River - Frontal Buzzards Bay	MA-BA-64	Sandwich 1.5 SSE	5.70"
0109000204	Paskamanset River - Frontal Buzzards Bay	MA-BR-14	Dartmouth 2.5 SSW	3.63"
0109000205	Sakonnet Point - Frontal Rhode Island Sound	RI-NW-7	Little Compton 0.6 E	4.61"
0109000206	Elizabeth Islands - Marthas Vineyard	MA-DK-5	West Tisbury 2.9 N	6.60"
0109000206	Elizabeth Islands - Marthas Vineyard	MA-DK-9	West Tisbury 0.4 S	4.92"
0109000206	Elizabeth Islands - Marthas Vineyard	MA-DK-2	Vineyard Haven 0.8 WSW	5.59"
0109000207	Nantucket Island	MA-NT-1	Nantucket 3.8 WNW	5.20"
01090003	Blackstone			
0109000301	Upper Blackstone River	MA-WR-41	Auburn 2.6 SW	1.53"
0109000301	Upper Blackstone River	MA-WR-43	Leicester 2.4 ESE	2.05"
0109000301	Upper Blackstone River	MA-WR-32	Auburn 1.9 ESE	1.22"
0109000302	Lower Blackstone River	RI-PR-50	Harrisville 1.2 SSE	1.79"
0109000302	Lower Blackstone River	RI-PR-28	North Smithfield 0.7 SE	1.33"
0109000302	Lower Blackstone River	MA-NF-16	Bellingham 4.7 S	1.18"
0109000302	Lower Blackstone River	RI-PR-55	Cumberland Hill 3.3 NE	1.44"
01090004	Narragansett			
0109000401	Upper Taunton River	MA-BR-30	Taunton 3.9 N	0.93"
0109000401	Upper Taunton River	MA-NF-31	Stoughton 1.2 E	1.20"
0109000401	Upper Taunton River	MA-PL-15	Abington 1.2 NNE	0.37"
0109000402	Middle Taunton River	MA-PL-17	Plympton 0.9 NNE	1.12"
0109000403	Threemile River	MA-NF-19	Foxborough 1.8 SSW	1.07"
0109000403	Threemile River	MA-NF-8	Foxborough 0.4 S	1.26"
0109000403	Threemile River	MA-BR-33	Taunton 2.4 W	1.04"
0109000403	Threemile River	MA-BR-9	Taunton 2.6 NW	1.87"
0109000404	Ten Mile River	MA-BR-17	North Attleboro 0.8 E	0.76"
0109000404	Ten Mile River	MA-BR-23	Attleboro 0.9 ENE	0.78"
0109000405	Wonnasquatucket River-Moshassuck River	RI-PR-33	Greenville 0.7 NNW	1.34"
0109000405	Woonasquatucket River-Moshassuck River	RI-PR-51	North Smithfield 0.6 S	1.28"
0109000405	Woonasquatucket River-Moshassuck River	RI-PR-53	Providence 1.7 N	0.77"

0109000406	Pawtuxet River	RI-PR-20	West Glocester 3.4 SE	1.70"
0109000408	Lower Taunton River - Frontal Mount Hope Bay	MA-BR-3	Norton 1.8 NNE	0.91"
0109000408	Lower Taunton River - Frontal Mount Hope Bay	MA-BR-16	Somerset 0.4 SSE	1.78"
0109000408	Lower Taunton River - Frontal Mount Hope Bay	MA-BR-19	Somerset 2.0 NNE	1.83"
0109000408	Lower Taunton River - Frontal Mount Hope Bay	MA-BR-8	Dighton 1.1 WSW	1.50"
0109000409	Narragansett Bay	RI-KN-2	East Greenwich 2.3 ESE	2.32"
0109000409	Narragansett Bay	RI-PR-32	Providence 2.3 NE	0.99"
0109000409	Narragansett Bay	RI-BR-5	Barrington 1.3 WNW	1.25"
0109000409	Narragansett Bay	RI-NW-4	Middletown 1.1 SW	1.73"
01090005	Pawcatuck-Wood			
0109000501	Wood River	RI-WS-1	Hope Valley 3.7 S	2.08"
0109000502	Upper Pawcatuck River	RI-WS-32	Kingston 6.9 NNW	2.38"
0109000502	Upper Pawcatuck River	RI-WS-40	West Warwick 7.7 S	2.86"
0109000503	Lower Pawcatuck River	RI-WS-35	Westerly 1.0 SW	1.77"
0109000504	Frontal Block Island Sound	RI-WS-36	Charlestown 3.0 WSW	2.79"
01100001	Quinebaug			
0110000101	Upper Quinebaug River	MA-HD-16	Wales 0.4 SSW	1.95"
0110000103	Fivemile River	CT-WN-6	Dayville 2.0 ENE	1.42"
0110000103	Fivemile River	CT-WN-4	East Killingly 1.3 SW	1.59"
0110000105	Mossup River	CT-WN-8	Moosup 1.7 NE	1.74"
0110000106	Pachaug River	CT-NL-21	Griswold 0.9 N	2.23"
01100002	Shetucket			
0110000201	Willimantic River	CT-TL-18	Hebron 5.3 NW	2.92"
0110000201	Willimantic River	CT-TL-2	Staffordville 0.4 NNW	2.22"
0110000202	Natchaug River	CT-WN-12	Eastford 2.0 W	2.45"
0110000203	Shetucket River	CT-WN-10	South Windham 1.3 NNE	1.84"
0110000203	Shetucket River	CT-WN-11	Scotland 2.3 SSW	2.15"
0110000203	Shetucket River	CT-NL-10	Norwich 2.5 NNE	1.90"
01100003	Thames			
0110000302	Thames River-Frontal New London Harbor	CT-NL-5	Oakdale 2.6 WNW	3.02"
0110000302	Thames River-Frontal New London Harbor	CT-NL-6	New London 1.0 NNW	2.10"
0110000302	Thames River-Frontal New London Harbor	CT-NL-8	Uncasville-Oxoboxo Valley 1.6 ENE	2.74"
0110000303	Mystic River - Frontal Fishers Island Sound	CT-NL-22	Central Waterford 2.7 SSW	2.22"
0110000303	Mystic River - Frontal Fishers Island Sound	CT-NL-24	Stonington 1.4 NNW	1.53"
0110000303	Mystic River - Frontal Fishers Island Sound	CT-NL-18	Stonington 0.5 NNE	1.73"
01100004	Quinnipiac			
0110000401	Quinnipiac River	CT-NH-14	Prospect 1.9 ENE	3.82"
0110000401	Quinnipiac River	CT-NH-30	Cheshire Village 2.2 SE	2.24"
0110000401	Quinnipiac River	CT-HR-23	Southington 0.9 SSE	3.18"
0110000401	Quinnipiac River	CT-NH-44	Wallingford Center 1.9 WNW	2.43"
0110000401	Quinnipiac River	CT-NH-42	Wallingford Center 1.1 N	2.34"

0110000402	Hammonasset River - Frontal Long Island Sound	CT-NH-41	Madison Center 1.6 W	2.03"
0110000402	Hammonasset River - Frontal Long Island Sound	CT-MD-15	Clinton 3.5 N	1.90"
0110000402	Hammonasset River - Frontal Long Island Sound	CT-MD-11	Westbrook Center 1.5 NE	3.63"
0110000403	Mill River - Frontal Long Island Sound	CT-NH-16	Milford 1.8 E	4.35"
0110000403	Mill River - Frontal Long Island Sound	CT-NH-39	West Haven 0.8 W	3.63"
0110000403	Mill River - Frontal Long Island Sound	CT-NH-29	Hamden 3.0 WSW	2.63"
0110000403	Mill River - Frontal Long Island Sound	CT-NH-38	Wallingford Center 2.3 WNW	2.23"
01100005	Housatonic			
0110000501	Headwaters Housatonic River	MA-BE-10	Pittsfield 2.0 NNW	6.36"
0110000501	Headwaters Housatonic River	MA-BE-5	Tyringham 1.5 WNW	2.38"
0110000504	Macedonia Brook - Housatonic River	CT-LT-20	Warren 2.4 WNW	5.58"
0110000508	Still River - Housatonic River	CT-FR-9	Brookfield 3.3 SSE	3.10"
0110000510	Eightmile Brook - Housatonic River	CT-FR-44	Newtown 4.3 E	3.21"
0110000511	Headwaters Naugatuck River	CT-LT-7	Litchfield 2.3 NNE	3.08"
0110000512	Outlet Naugatuck River	CT-LT-14	Watertown 0.5 S	2.79"
0110000512	Outlet Naugatuck River	CT-NH-45	Naugatuck 1.7 NNE	2.94"
0110000513	Housatonic River - Frontal Long Island Sound	CT-FR-42	Monroe 0.1 SE	4.40"
0110000513	Housatonic River - Frontal Long Island Sound	CT-FR-23	Shelton 1.3 W	3.65"
0110000513	Housatonic River - Frontal Long Island Sound	CT-FR-46	Stratford 0.2 ESE	3.31"
01100006	Saugatuck			
0110000601	Saugatuck River - Frontal Long Island Sound	CT-FR-31	Newtown 4.6 SSW	2.79"
0110000602	Norwalk River - Frontal Norwalk Harbor	CT-FR-29	Ridgefield 1.9 SSE	2.49"
0110000602	Norwalk River - Frontal Norwalk Harbor	CT-FR-3	New Canaan 1.9 ENE	2.92"
0110000602	Norwalk River - Frontal Norwalk Harbor	CT-FR-25	Norwalk 2.9 NNW	2.80"
0110000603	Pequonnock River - Frontal Long Island Sound	CT-FR-20	Westport 2.5 ENE	3.07"
0110000603	Pequonnock River - Frontal Long Island Sound	CT-FR-52	Trumbull 1.1 W	3.34"
0110000604	Mianus River-Rippowam River	CT-FR-12	Stamford 3.3 NW	3.09"
0110000604	Mianus River-Rippowam River	CT-FR-50	Darien 2.8 NW	2.45"

Accumulated Precipitation (in)
August 01, 2017 to August 31, 2017



Map of the Month – Norfolk County MA

Norfolk County includes twenty-eight eastern Massachusetts communities, mostly located to the south and west of the city of Boston. The County government was incorporated in 1793 by an act of the Legislature signed into law by Governor John Hancock, and has its county seat at the town of Dedham.

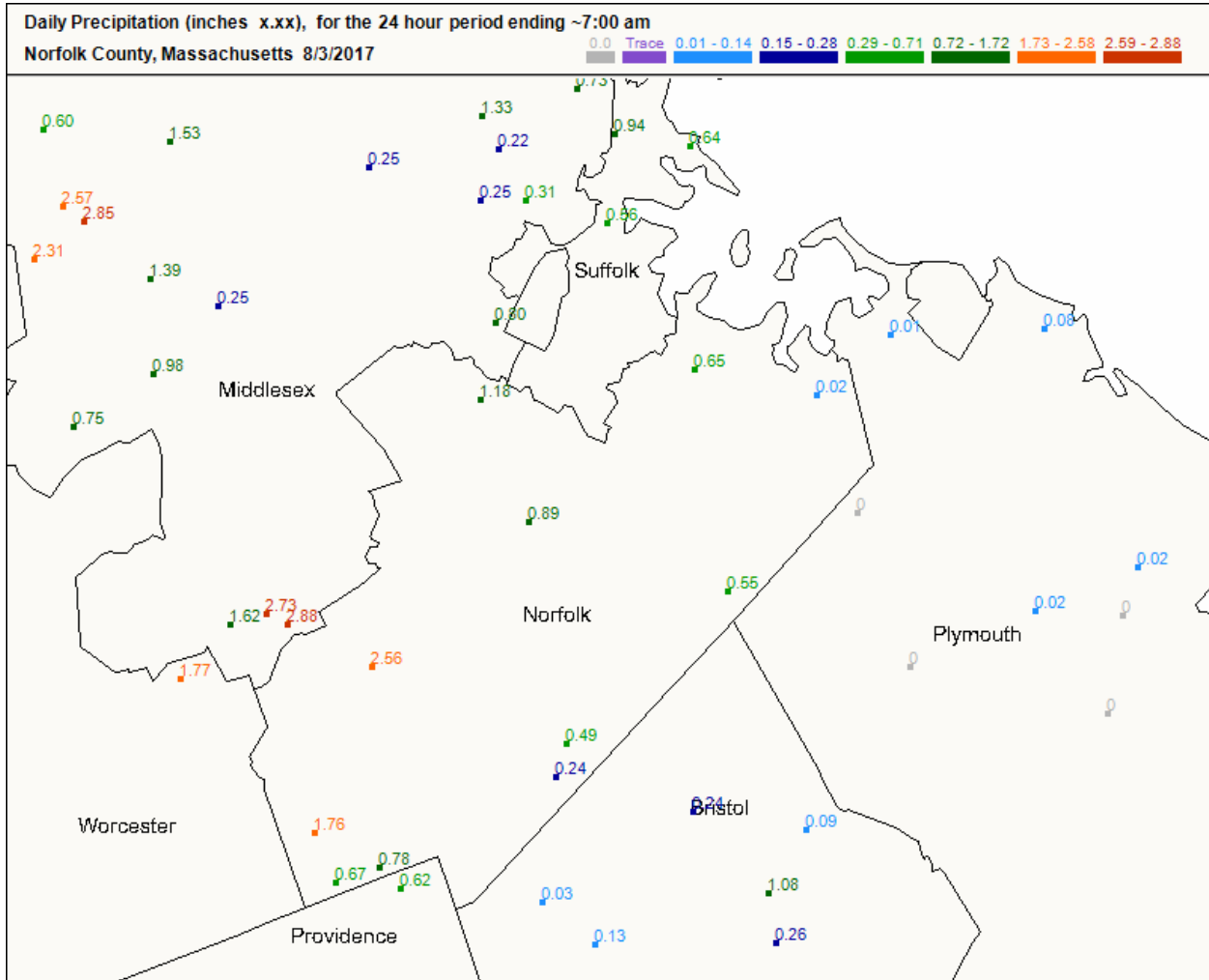
The county includes one city, Quincy, and 27 towns, 4 of which Weymouth, Franklin, Randolph, and Braintree, have city forms of government. As a result of its history, Norfolk County has two communities, Brookline and Cohasset, which are not contiguous with the rest of the county.

Norfolk County is known as the "County of Presidents," being the birthplace of four Presidents of the United States: John Adams, John Quincy Adams, John F. Kennedy, and George Herbert Walker Bush.

Many of the communities are residential suburbs of Boston. Economic activity within the county includes technology, research and development, retail, wholesale, and manufacturing. The Blue Hills Reservation, located in Milton and surrounding areas, is the home of the Blue Hill Observatory which has the distinction of maintaining the longest continuous set of weather records in North America, dating back to 1885.

Watersheds in Norfolk County include the Charles River, which is the most densely populated watershed in New England, and the Neponset River which runs for 30 miles from the Neponset Reservoir in Foxborough to Dorchester Bay in Quincy.

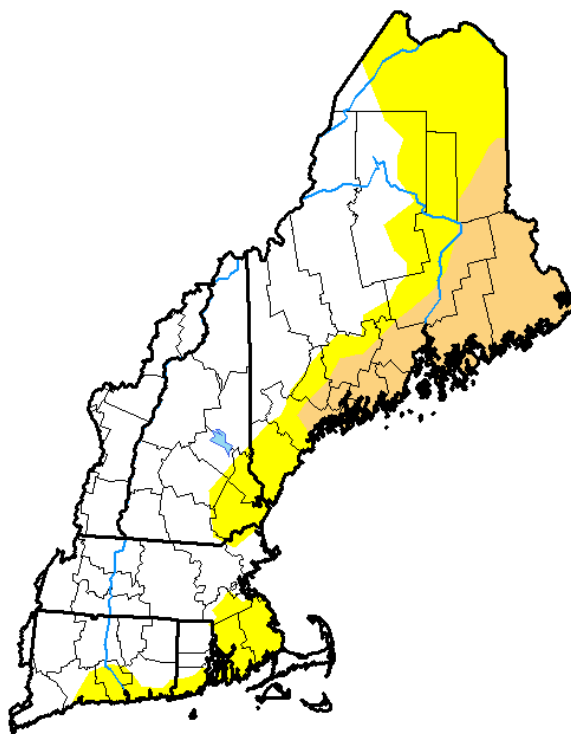
We have several observers in Norfolk County but can always use more! If you know of someone who might be interesting in measuring and mapping precipitation, ask them to join CoCoRaHS.



From the Drought Monitor.

D0 has crept into southeastern Massachusetts and some sections of shorelines of Connecticut and Rhode Island. Recently removed from Nantucket Island. Every drop counts and zeros do too!

U.S. Drought Monitor New England Watershed



September 5, 2017

(Released Thursday, Sep. 7, 2017)

Valid 8 a.m. EDT

Drought Conditions (Percent Area)

	None	D0-D4	D1-D4	D2-D4	D3-D4	D4
Current	58.17	41.83	15.68	0.00	0.00	0.00
Last Week <i>08-29-2017</i>	58.09	41.91	15.68	0.00	0.00	0.00
3 Months Ago <i>06-06-2017</i>	100.00	0.00	0.00	0.00	0.00	0.00
Start of Calendar Year <i>01-03-2017</i>	14.64	85.36	73.47	24.24	4.63	0.00
Start of Water Year <i>09-27-2016</i>	26.77	73.23	58.78	40.14	14.56	0.00
One Year Ago <i>09-06-2016</i>	36.11	63.89	35.87	18.57	5.01	0.00

Intensity:

- D0 Abnormally Dry
- D1 Moderate Drought
- D2 Severe Drought
- D3 Extreme Drought
- D4 Exceptional Drought

The Drought Monitor focuses on broad-scale conditions. Local conditions may vary. See accompanying text summary for forecast statements.

Author:

Deborah Bathke
National Drought Mitigation Center



<http://droughtmonitor.unl.edu/>

For a viewing explanation on the Drought Monitor, the CoCoRaHS animated video is on [YouTube](#).

Condition Monitoring Reports

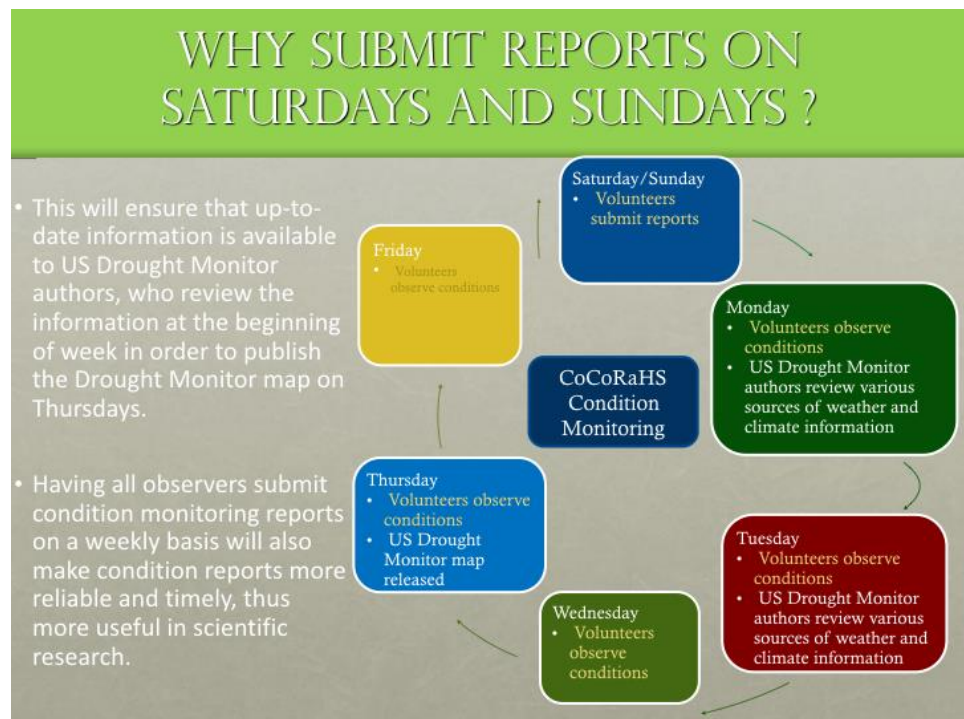
What started last October as a change from our Drought Reports, is about to grow into its own map of reports, a map of Condition Monitoring Reports, similar to what we currently have with our precip and snow reports.

In the past month, one of our observers entered a Condition Monitoring Report that caught the eye of Drought Reporter was turned into an Impact Report. Select some other category besides “General Awareness” to get your report to the Drought Reporter.



Whether wet or dry or anything in between, you all have something valuable to say about your locale.

Be part of the Condition Monitoring Reports.



Wrap up

The climax of the tropical cyclone season has claimed the next WxTalk Webinar, postponed until the tropical cyclone season subsides. Titled ***Storm Surge, Run From the Water, Hide from the Wind***, by Jamie Rhome, Storm Surge Specialist, at the National Hurricane Center in Coral Gables FL. Keep watch over the Message of the Day to see when this Webinar will be rescheduled.

It is recommended that you go to the website in the next few days before Monday and submit a Condition Monitoring Report. When the new mapping function is released next week, you can see your recent report with the new mapping function. Something new is coming. It is exciting to see our reports going further and another dimension added to our participation in this network. We can fill up the map with our reports. Join in.

Summer will officially end and Autumn will officially begin with the equinox, coming on Friday September 22 at 4:02pm. 12 hours of daylight and darkness coming to all points on our planet.

October 1 starts a new Water Year and a new snow reporting season.

Thank you for all that you do for CoCoRaHS, whether in the past, present and in the days to come.