

Community Collaborative Rain, Hail & Snow Network



Southern



New England

June 2020

Happy Birthday, CoCoRaHS! Today we celebrate 22 years of our network.

This month's anniversary feature is for Connecticut. All of our 3 states are about half as old as the network is.

We had measurable snow in May!

Many other reporting records were broken, here in our 3 states and throughout the entire network.

We kick it all off with our observers, recently crossing over multiples of 1000 Daily Reports, our version of The "Grand" List.

Let's get into it.

The “Grand” List

Congratulations to all of these observers from our three states who have recently passed a milestone of 1000 Daily Reports.

4000 Daily Reports

MA-PL-5 Kingston 3.3 WNW

3000 Daily Reports

MA-BA-2 Falmouth 3.1 NNW

2000 Daily Reports

CT-WN-8 Moosup 1.7 NE

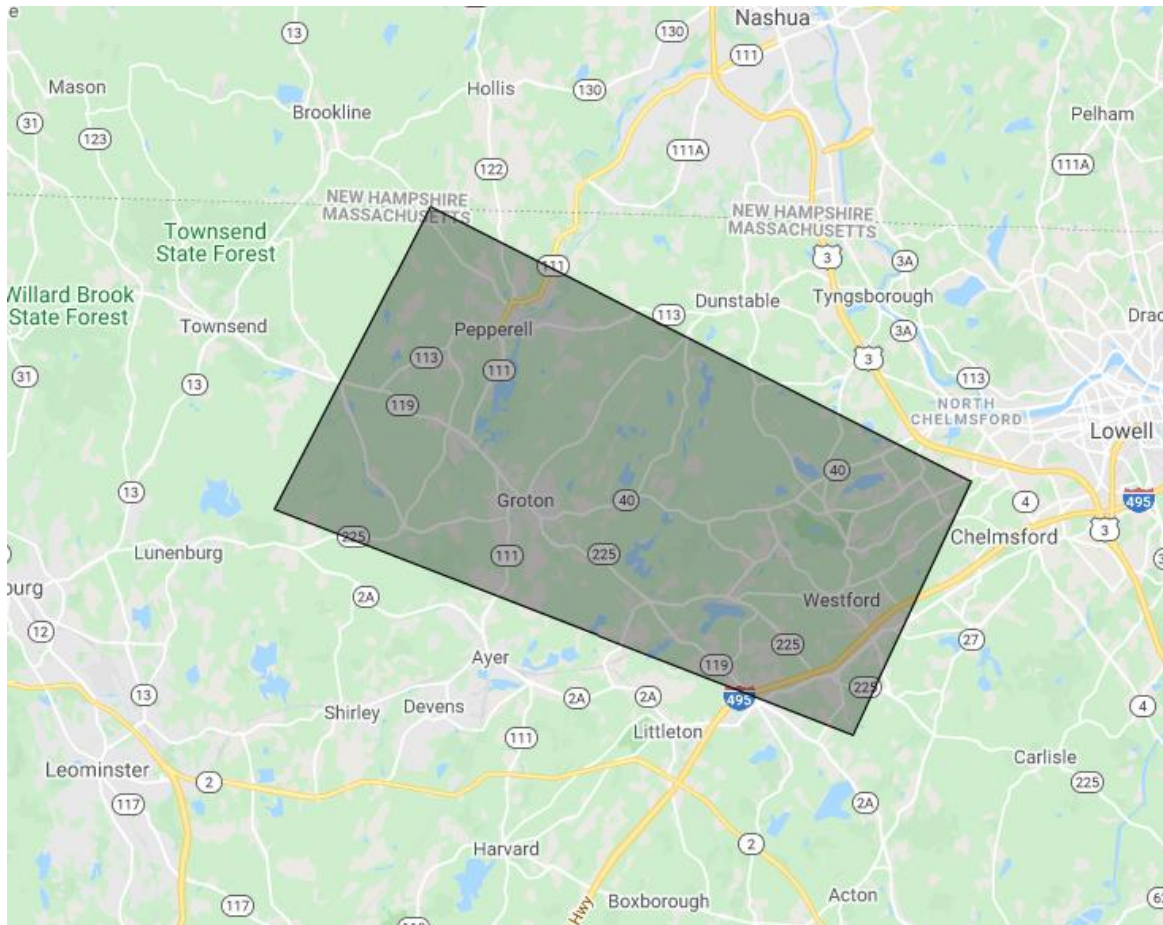
1000 Daily Reports

MA-PL-30 Duxbury 3.7 W
MA-MD-105 Littleton 0.9 WSW
RI-PR-55 Cumberland Hill 3.6 NNE
CT-NH-45 Naugatuck 1.7 NNE
CT-LT-5 Winsted 2.6 NNW

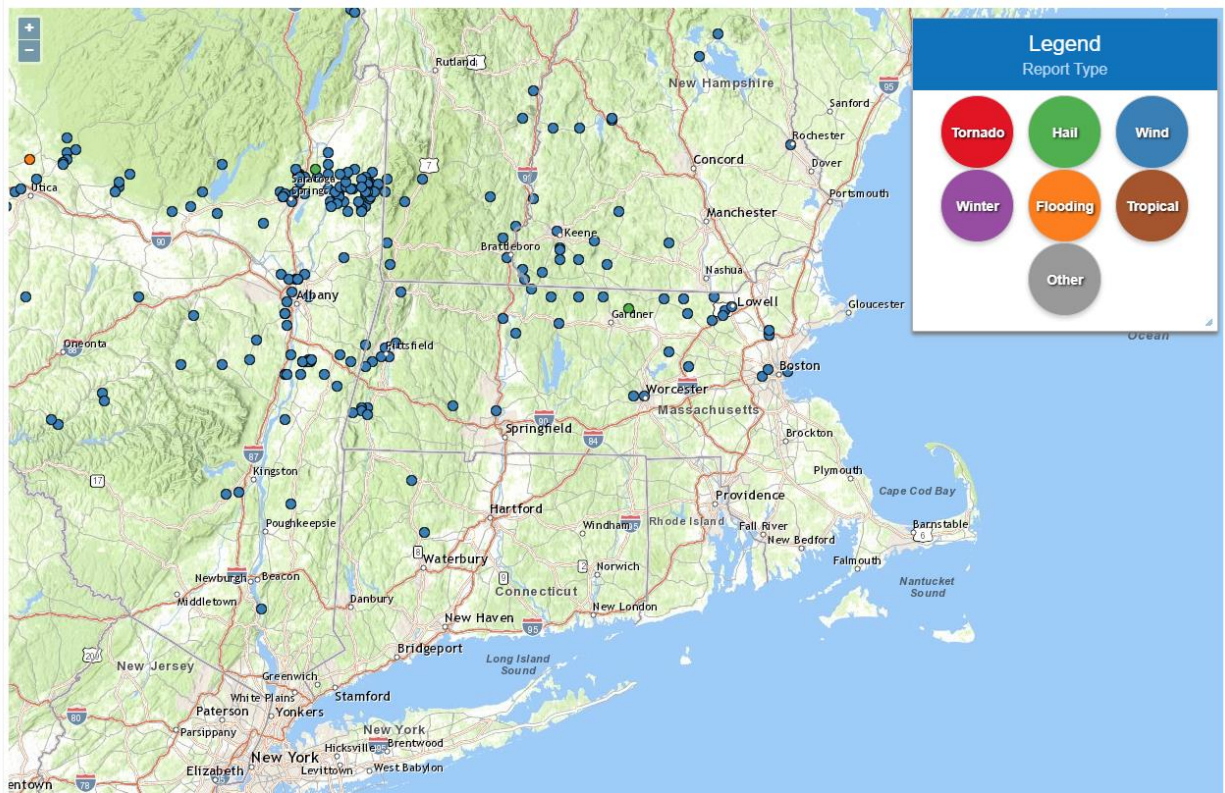
May 15, 2020 Severe Thunderstorms

Joe DelliCarpini – Science & Operations Officer, NWS Boston/Norton MA

On Friday, May 15, 2020, a line of severe thunderstorms produced damaging winds in Massachusetts, mainly along and north of the Mass Pike. A wind gust to 86 mph was recorded at a home weather station in Westford MA and a gust to 63 mph was recorded at Worcester Airport. Damage was especially significant in northeast Massachusetts, in Groton MA, Pepperell MA, and Westford MA where winds estimated to be as high as 90 to 100 mph brought down hundreds of trees.

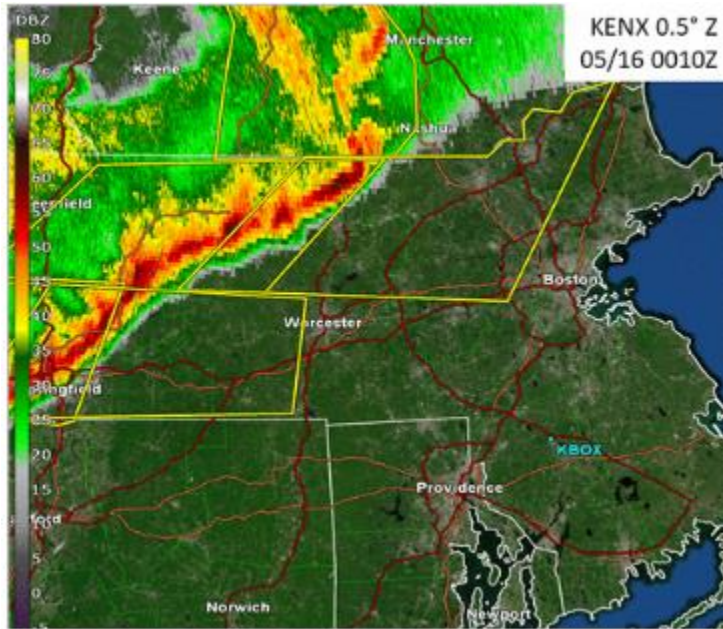


PEPPERELL, GROTON AND WESTFORD MA



DAMAGE REPORTS FROM MAY 15, 2020

The line of storms formed early in the afternoon near Lake Ontario, ahead of a cold front, and tracked east, producing wind damage throughout much of upstate New York as well as an EF-1 tornado in Wilton, NY. The storms reached New England early in the evening and continued to produce damaging winds.



RADAR IMAGE FROM 8:10 PM ON MAY 15, 2020

As damage reports came into our office that night and the next day, there was some question as to whether the damage in Westford MA and Pepperell MA was the result of a tornado. Upon looking at photos of the damage that were provided to us, it was evident that the damage was produced by straight-line winds. In the photo below, taken by a drone, you can clearly see the trees are all lying down in the same direction and there is a

“spreading out” in the damage pattern. This is an indication of damage caused by straight-line winds. Damage caused by a tornado features a convergent pattern among the downed trees and often you can see twisting of the debris.



DRONE FOOTAGE OF WIND DAMAGE NEAR COW POND IN WESTFORD MA. COURTESY OF DAVID HUPP.

News Items

15,000 Daily Reports in one day

View Data : Rainy Days Report (US Units)

Search Location and Date Range						
Location: <small>All Countries</small>						
Date Range:						
Start Date: 5/1/2020 End Date: 5/31/2020						
Search						
Date	Avg Precip in.	Max Precip in.	# Total Reports	# Reports > Trace	# Trace Reports	# Snow > 0
5/1/2020	0.20	3.91	13959	5343	511	1
5/2/2020	0.05	2.20	13575	3791	778	0
5/3/2020	0.07	4.72	13816	4250	587	4
5/4/2020	0.08	2.15	13999	4269	644	14
5/5/2020	0.12	3.21	14364	5367	676	23
5/6/2020	0.08	4.05	14060	4957	497	18
5/7/2020	0.03	3.28	13777	3329	603	9
5/8/2020	0.09	2.75	14124	4154	610	77
5/9/2020	0.11	5.30	13824	5351	467	446
5/10/2020	0.02	2.25	13571	2786	937	243
5/11/2020	0.05	3.40	13966	3874	962	33
5/12/2020	0.11	5.08	14761	6651	746	61
5/13/2020	0.16	10.11	14568	5211	742	47
5/14/2020	0.10	5.44	14765	6506	847	3
5/15/2020	0.22	8.50	14662	7137	720	5
5/16/2020	0.28	8.02	14734	7705	528	2
5/17/2020	0.26	6.48	14304	5931	551	0
5/18/2020	0.30	5.44	14445	6839	685	1
5/19/2020	0.27	6.69	14481	6462	469	11
5/20/2020	0.17	8.39	14242	5193	729	2
5/21/2020	0.20	11.25	14275	4865	708	2
5/22/2020	0.17	5.45	14491	5927	772	1
5/23/2020	0.20	5.10	14215	6834	625	20
5/24/2020	0.15	4.00	14209	5970	753	10
5/25/2020	0.34	9.59	15011	8057	778	49
5/26/2020	0.24	10.53	14918	7961	898	1
5/27/2020	0.15	11.25	14417	6005	765	0
5/28/2020	0.22	4.21	14850	8553	760	1
5/29/2020	0.18	4.86	14388	7426	792	0
5/30/2020	0.14	6.37	13891	6004	825	1
5/31/2020	0.09	3.41	13620	4118	586	0

On Tuesday, May 25th, carried by over 8,000 reports of precipitation, all of us in the network contributed to this single day record of exceeding 15,000 Daily Reports in one day.

May is the best time to break a reporting record such as this. More widespread rains, less vacations, less cold air, and fresh from our March recruiting drive.

From the “View Data” section of the website, “Rainy Days Report” is Nolan’s favorite inquiry tool. You can use it for any part of our network, state or county for a 125 day (4 month) range.

Congratulations to everyone that was a part of this significant milestone!

Single Month Records: Like a broken record, we keep breaking single month records. Congratulations to all!!

- ✓ Reporting Observers: 435
- ✓ Daily Reports for Connecticut: 3,855
- ✓ Daily Reports for Massachusetts: 6,022
- ✓ Daily Reports for Rhode Island: 1,781
- ✓ “Rulers of the Snow” stations: 83
- ✓ Condition Monitoring Reports: 101
- ✓ Daily Reports for a single day: 412 set on May 16th

Observer Tips

Significant Weather Reports: As the storms get stronger, keep our reporting criteria in mind, as we can alert our area NWS Forecast Offices in real time with what is occurring. Reporting criteria are

- **1” or more of rain in 1 hour or less.**
- **2” or more of rain.**
- **Flooding.**
- **Anything you feel is significant.** Like snow in May!

mPING app for Apple and Android: Continue to use mPING in real-time on your GPS enabled mobile device for whatever meteorological phenomena comes our way.

Observation Time: A recent discussion took place on the CoCoRaHS Facebook site. A blog entry was written about it, [linked here](#).

For several reasons explained in the blog, we are a morning reporting network. We do allow flexibility within the morning hours.

There is value in consistently reporting every day, and at the same time every day. If you want your default observation time change, please contact any one of your Coordinators.

Comments: Observation Notes. Additional Notes. As the rains get stronger, the comments should get longer, and more of them.

We enter the season of big downpours and even larger variations in reported amounts. Your Comments that verify and clarify your reported amounts can and do help the many of us whose eyes get large when we see what you reported.

Happy Anniversary, Connecticut!



July 1, 2009. Connecticut is admitted to CoCoRaHS, the 45th state to join the network.

Connecticut CoCoRaHS

Comments by Matt Spies – Connecticut State Coordinator

Who gets a vote? We do. We get to vote every day. Every day that you find the website or find the mobile app and press submit, we vote. We define this climate. We define these Conditions.

No longer do we rely heavily on automated gauges that are at our airports. When we want to know if conditions are wet or dry, normal or not, we have many of you to look at who report day after day after day.

Connecticut Precipitation
National Weather Service Offices
Boston/Norton MA, Albany NY, Upton NY
Preliminary Precipitation Data (inches) by County
Precipitation Data Through May 2020

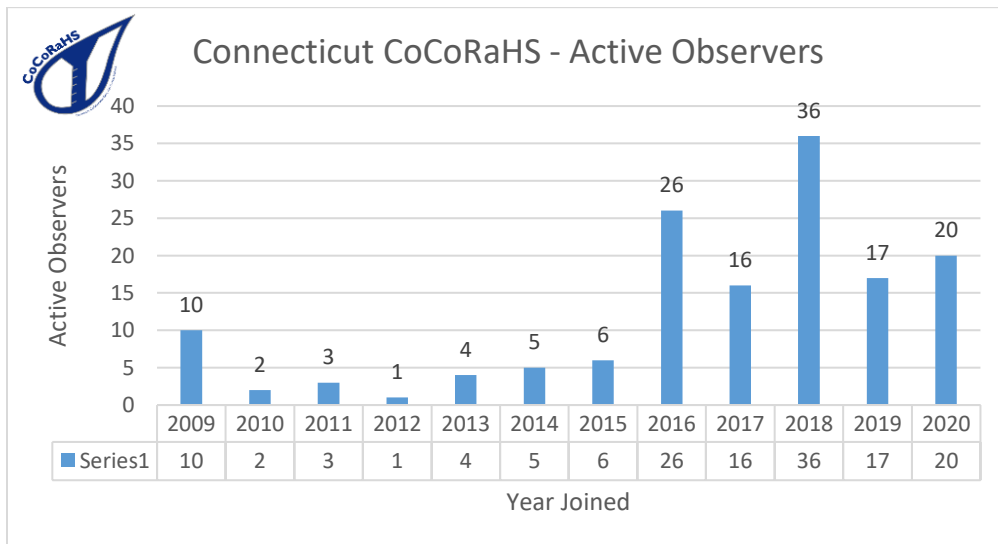
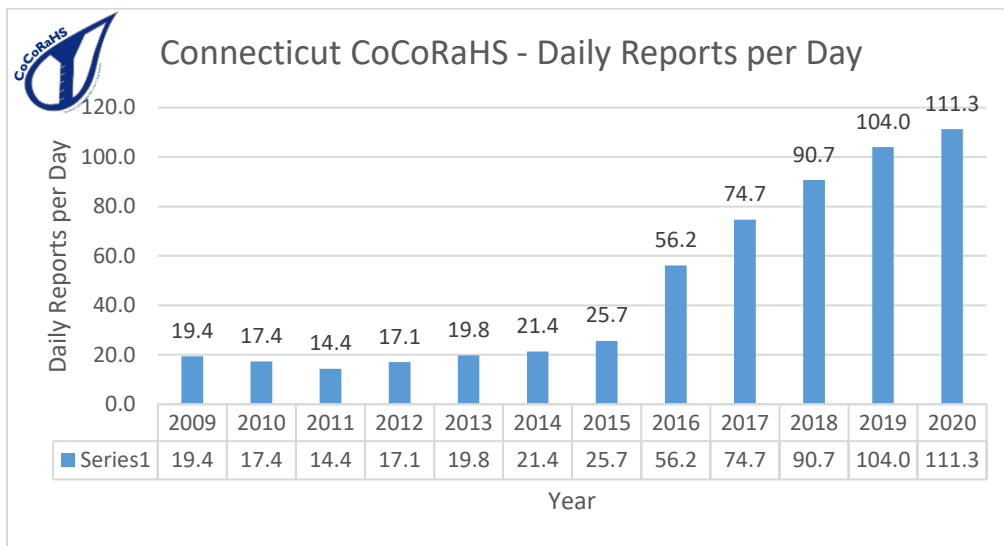
Includes CoCoRaHS data

CT 1 Month May 2020	Rainfall	Departure	Percent	Normal
Litchfield	3.26	-1.15	74	4.41
Hartford	2.87	-1.55	65	4.42
Tolland	3.12	-0.97	76	4.10
Windham	3.71	-0.31	92	4.02
Fairfield	2.46	-1.93	56	4.39
New Haven	2.89	-1.35	68	4.24
Middlesex	3.40	-0.82	81	4.22
New London	3.70	-0.06	98	3.76

This table is put together every month, and goes on to look at 2, 3, 6, 12, 24 & 36 months as well. Your monthly reported precipitation totals are averaged into this table. The dozens of you that report every day, get to vote on this too and its results goes to our state government.

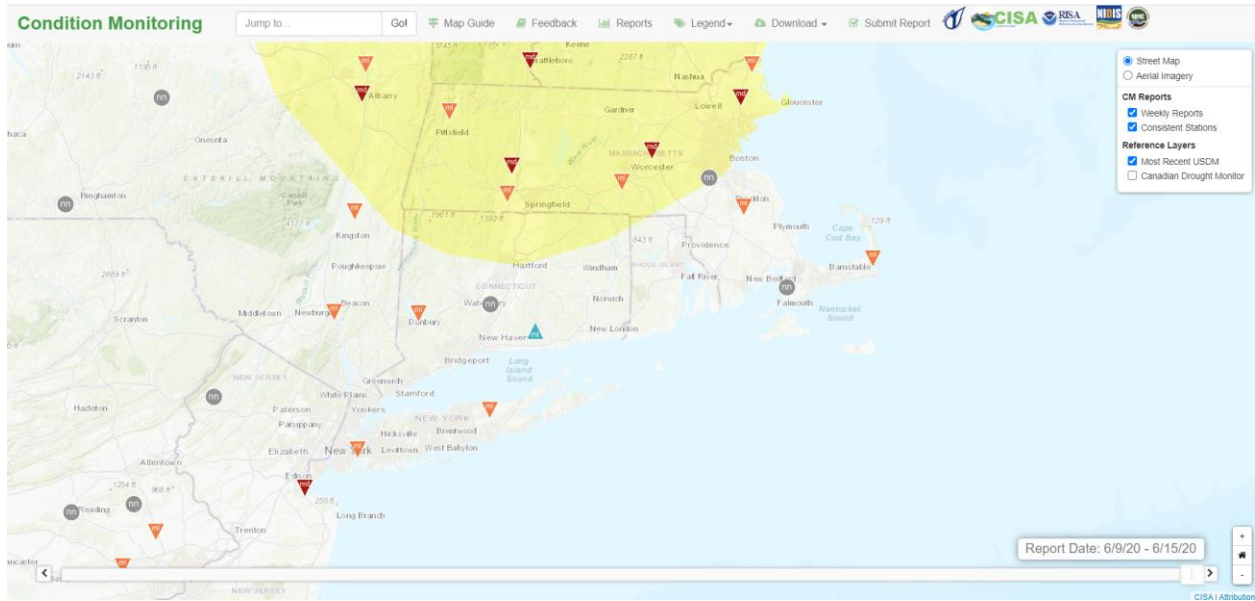
CoCoRaHS is Citizen Science at its finest, performed by volunteers of all ages and backgrounds, all throughout the year, through good weather and bad. From many, comes a mosaic of contributions, each day.

Whether you joined 11 weeks ago or when we started 11 years ago, thank you for being a part of our network, thank you for showing so many what our network can do and does every day. Low cost gauges and rulers have high value impacts. We monitor, measure and define a critically important resource: water.



Condition Monitoring Reports: The spring rains have ended and days without rain are upon us. What are the conditions where you are?

One report a week is all that we seek. Develop a reputation of being a Consistent Station by submitting over 20 reports in a 52-week timeframe.



MA-ES-12 **Boxford 2.4 S**
Mon Jun 15 2020

Soil conditions remain dry despite a little rain this past week. Lawns are showing some stress but gardens and trees continue to do well.

MA-ES-12 -- General Awareness, Plants And Wildlife

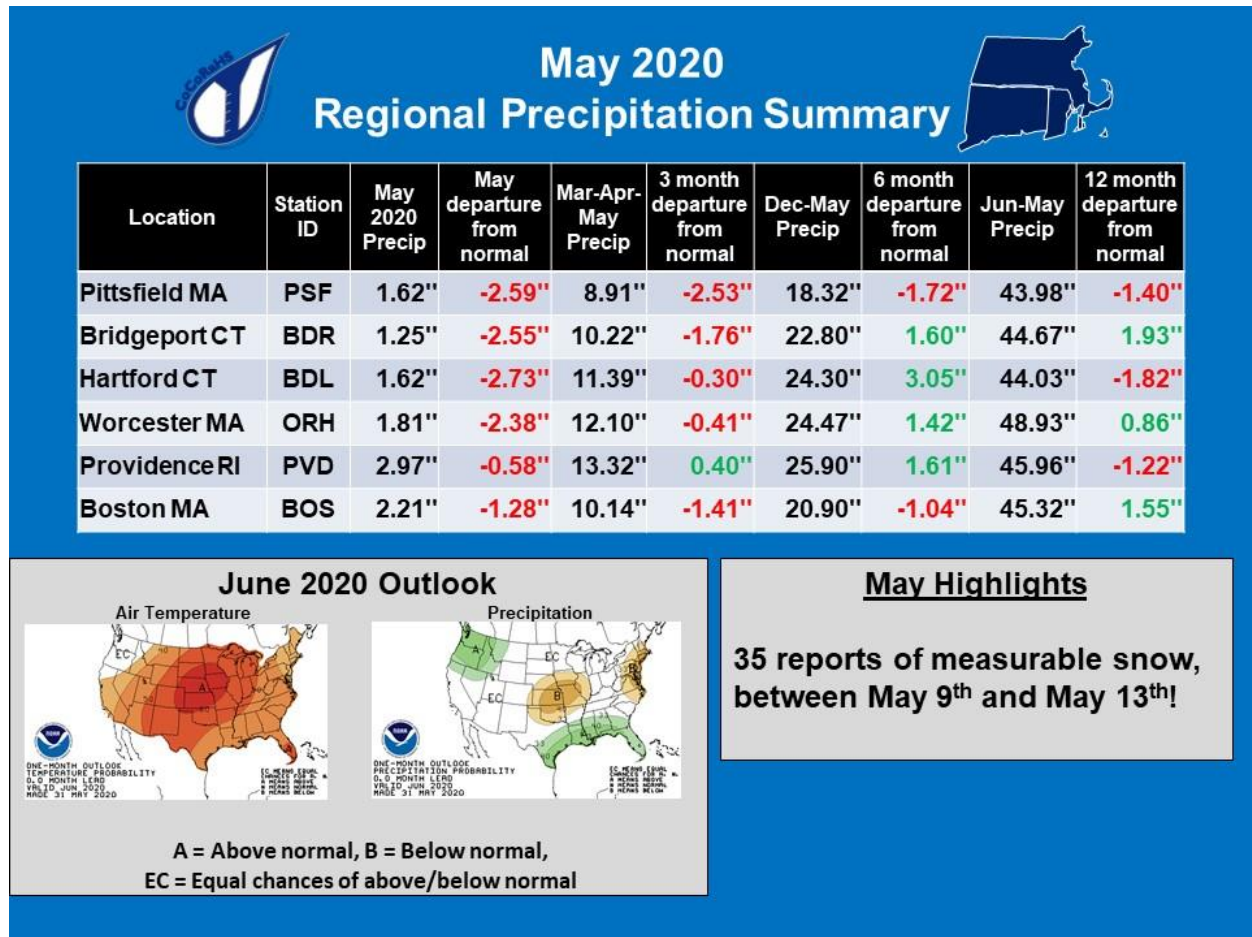
CT-NH-43 **Wallingford Center 3.3 NNW**
Sat Jun 13 2020

In spite of a nearly one inch rainfall just one day prior moisture levels remain near normal as the significant rainfall events have been less frequent than they were earlier in the Spring.

CT-NH-43 -- General Awareness

Detail and Summary for May 2020

From the National Weather Service (NWS) Climate sites for May 2020.



May started off with a widespread 1" rain that lingered into the 2nd. Light rain to the east on the 7th. Rain on the 9th, followed by a Freeze Warning, followed by snow squalls the next day. Measurable snow during this cold stretch between the 9th and the 13th. More light rain, with Severe Thunderstorm Warnings, on the 15th and 16th. A dry stretch leading up to Memorial Day Weekend. Rains on the Saturday of Memorial Day Weekend, with the heaviest in Falmouth and on the Islands. Light rain on the 29th to close out the weekend.

Take in the next section with appreciation for your efforts.

From your reports for May 2020

Observers reporting	435
Reported all 31 days	250
Completed by Multi-Day Reports	27
Missing 1 or 2 reports	66
Daily Reports	11,658
Zero Reports	6,053
Non-Zero Reports	5,615
Daily Comments	2,008
Multi-Day Reports	138
Condition Monitoring Reports	101
Significant Weather Reports	14
Hail Reports	14
Snowfall Reports	6,143
Snow Depth Reports	3,608
Total SWE Reports	2,411
Highest Daily Report	3.54" in Edgartown MA (MA-DK-22) reported on 5/24

A single month record here, 277 stations listed. We are filling up 8 pages.

Have no missing days in the calendar month, no NA's on big precip days, use Multi-Day Reports accurately, and your station can end up on this list.

Watershed	Watershed Name	Station Number	Station Name	Precip
01060003	Piscataqua-Salmon Falls			
01070004	Nashua			
0107000401	North Nashua River	MA-WR-44	Westminster 0.6 WSW	2.70"
0107000401	North Nashua River	MA-WR-8	Fitchburg 1.6 SSW	1.97"
0107000401	North Nashua River	MA-WR-22	Fitchburg 2.0 NNE	2.76"
0107000402	Headwaters Nashua River	MA-WR-56	Sterling 4.3 NW	2.65"
0107000402	Headwaters Nashua River	MA-WR-58	Lunenburg 0.6 NE	2.79"
0107000402	Headwaters Nashua River	MA-MD-25	Ayer 0.1 SW	2.03"
0107000403	Squannacook River	MA-MD-47	West Townsend 0.5 W	2.59"
01070005	Concord			
0107000501	Sudbury River	MA-MD-156	Marlborough 2.8 ENE	2.93"
0107000501	Sudbury River	MA-MD-89	Sudbury 3.6 W	2.97"
0107000502	Concord River	MA-WR-30	Shrewsbury 1.6 NNE	2.79"
0107000502	Concord River	MA-WR-28	Berlin 1.3 WSW	2.78"
0107000502	Concord River	MA-WR-42	Northborough 2.3 N	2.86"
0107000502	Concord River	MA-MD-115	Hudson 1.4 NW	2.50"
0107000502	Concord River	MA-WR-55	Harvard 2.1 S	2.25"
0107000502	Concord River	MA-MD-12	Acton 1.3 SW	2.58"
0107000502	Concord River	MA-MD-51	Maynard 0.7 ESE	2.42"
0107000502	Concord River	MA-MD-62	Chelmsford 1.2 E	1.84"
01070006	Merrimack River			
0107000612	Stony Brook - Merrimack River	MA-MD-104	Littleton 2.8 NNW	2.15"
0107000612	Stony Brook - Merrimack River	MA-MD-105	Littleton 0.9 WSW	2.27"
0107000612	Stony Brook - Merrimack River	MA-MD-93	Westford 1.5 SSW	1.83"
0107000613	Shawsheen River	MA-MD-96	Lexington 0.3 NE	2.74"
0107000613	Shawsheen River	MA-ES-48	Andover 0.6 E	2.31"
0107000614	Powwow River - Merrimack River	MA-ES-66	North Andover 0.3 NW	1.39"
0107000614	Powwow River - Merrimack River	MA-ES-20	Haverhill 0.7 N	1.83"
0107000614	Powwow River - Merrimack River	MA-ES-4	Groveland 0.5 WSW	1.72"
0107000614	Powwow River - Merrimack River	MA-ES-61	Amesbury 2.6 WSW	1.79"
0107000614	Powwow River - Merrimack River	MA-ES-59	Amesbury 1.2 N	2.06"
0107000614	Powwow River - Merrimack River	MA-ES-64	Newburyport 0.4 NNW	2.27"
0107000614	Powwow River - Merrimack River	MA-ES-56	Newburyport 1.0 ESE	1.58"

01080201	Middle Connecticut			
0108020106	Manhan River - Connecticut River	MA-HS-2	Westhampton 1.8 SW	2.92"
0108020106	Manhan River - Connecticut River	MA-HS-8	Williamsburg 1.2 WSW	3.66"
0108020106	Manhan River - Connecticut River	MA-HS-26	Easthampton 0.5 SW	2.99"
0108020106	Manhan River - Connecticut River	MA-HS-21	Northampton 0.6 ESE	2.78"
0108020106	Manhan River - Connecticut River	MA-FR-12	Sunderland 1.3 SE	2.60"
0108020107	Batchelor Brook - Connecticut River	MA-HD-13	Springfield 4.1 W	2.50"
01080202	Miller			
0108020201	Upper Millers River	NH-CH-20	Rindge 3.2 ESE	2.69"
0108020202	Lower Millers River	MA-WR-40	Gardner 1.4 SSW	3.08"
01080203	Deerfield			
0108020303	North River	MA-FR-31	Colrain 3.7 WNW	2.68"
0108020303	North River	MA-FR-29	Colrain 0.8 WNW	2.51"
0108020305	Lower Deerfield River	MA-FR-17	Buckland 1.8 ESE	3.47"
0108020305	Lower Deerfield River	MA-FR-13	Conway 2.9 NW	3.32"
0108020305	Lower Deerfield River	MA-FR-25	Conway 2.7 NW	3.01"
0108020305	Lower Deerfield River	MA-FR-10	Conway 0.9 SW	2.90"
01080204	Chicopee			
0108020402	Ware River	MA-WR-54	Barre 1.4 NNE	2.91"
0108020403	Quaboag River	MA-HD-26	Brimfield 3.6 NW	2.76"
0108020403	Quaboag River	MA-WR-75	Warren 2.4 WSW	2.49"
0108020404	Chicopee River	MA-HD-25	Ludlow 2.3 SW	2.53"
01080205	Lower Connecticut			
0108020501	Mill River - Connecticut River	CT-HR-82	Suffield 0.5 NNE	2.71"
0108020501	Mill River - Connecticut River	CT-HR-99	Suffield 3.6 ENE	2.55"
0108020501	Mill River - Connecticut River	CT-HR-57	Suffield Depot 3.3 NNE	2.51"
0108020501	Mill River - Connecticut River	CT-HR-5	Enfield 1.5 SE	2.73"
0108020501	Mill River - Connecticut River	MA-HD-20	Wilbraham 3.7 SSW	2.42"
0108020501	Mill River - Connecticut River	MA-HD-30	Hampden 2.0 NW	2.57"
0108020502	Scantic River	CT-TL-26	Broad Brook 2.6 ESE	2.29"
0108020502	Scantic River	CT-TL-35	Somersville 0.2 ENE	2.54"
0108020502	Scantic River	MA-HD-32	East Longmeadow 2.3 ESE	2.54"
0108020502	Scantic River	CT-TL-15	Central Somers 0.3 N	2.58"
0108020503	Park River	CT-HR-39	Farmington 1.6 SW	3.46"
0108020503	Park River	CT-HR-49	West Hartford 1.1 W	2.33"
0108020504	Hockanum River	CT-HR-100	Manchester 0.4 ENE	2.72"
0108020505	Roaring Brook - Connecticut River	CT-HR-6	Wethersfield 1.2 WSW	3.45"
0108020505	Roaring Brook - Connecticut River	CT-HR-45	Wethersfield 1.9 SSW	3.56"
0108020505	Roaring Brook - Connecticut River	CT-HR-68	Rocky Hill 1.3 E	3.13"
0108020505	Roaring Brook - Connecticut River	CT-HR-22	East Hartford 1.3 E	2.32"
0108020506	Mattabesset River	CT-HR-15	Southington 3.0 E	3.93"

0108020506	Mattabesset River	CT-HR-80	Kensington 0.7 WSW	3.43"
0108020506	Mattabesset River	CT-HR-65	Newington 1.9 SSW	3.41"
0108020506	Mattabesset River	CT-MD-25	Middlefield 0.6 SE	3.56"
0108020507	Higganum Creek - Connecticut River	CT-MD-23	Higganum 0.7 N	3.80"
0108020507	Higganum Creek - Connecticut River	CT-MD-26	Higganum 0.8 NE	3.01"
0108020509	Eightmile River - Connecticut River	CT-MD-19	Ivoryton 0.9 WSW	3.05"
0108020509	Eightmile River - Connecticut River	CT-MD-18	Essex Village 0.9 S	3.63"
01080206	Westfield			
0108020601	Headwaters Westfield River	MA-HS-7	Plainfield 2.2 SW	2.91"
0108020601	Headwaters Westfield River	MA-HS-14	Plainfield 2.4 ESE	2.81"
0108020603	Outlet Westfield River	MA-HD-29	West Springfield 1.6 SSW	2.49"
01080207	Farmington			
0108020701	Still River	CT-LT-15	Colebrook 1.0 NE	3.07"
0108020702	West Branch Farmington River	CT-LT-18	New Hartford Center 1.5 N	2.33"
0108020704	Headwaters Farmington River	CT-LT-9	New Hartford Center 3.2 SW	2.21"
0108020704	Headwaters Farmington River	CT-HR-28	North Canton 0.8 SSW	2.36"
0108020705	Salmon Brook	CT-HR-8	North Granby 1.3 ENE	3.02"
01090001	Charles			
0109000101	Plum Island Sound - Frontal Atlantic Ocean	MA-ES-46	Georgetown 1.3 ENE	2.03"
0109000101	Plum Island Sound - Frontal Atlantic Ocean	MA-ES-24	Newburyport 0.8 SW	2.17"
0109000102	Ipswich River	MA-MD-85	Wilmington 2.2 WNW	2.46"
0109000102	Ipswich River	MA-MD-125	Tewksbury 3.6 SSE	2.21"
0109000102	Ipswich River	MA-MD-45	Wilmington 1.5 NE	2.26"
0109000102	Ipswich River	MA-MD-160	Reading 1.2 N	2.35"
0109000102	Ipswich River	MA-ES-58	Middleton 1.4 SSW	2.36"
0109000102	Ipswich River	MA-ES-12	Boxford 2.4 S	2.01"
0109000102	Ipswich River	MA-ES-2	Beverly 2.8 NW	2.23"
0109000103	Essex River - Frontal Atlantic Ocean	MA-ES-41	Danvers 0.8 ESE	2.07"
0109000103	Essex River - Frontal Atlantic Ocean	MA-ES-22	Rockport 1.0 E	1.81"
0109000104	Saugus River - Frontal Broad Sound	MA-MD-81	Wakefield 0.5 NNW	2.79"
0109000104	Saugus River - Frontal Broad Sound	MA-MD-126	Melrose 0.5 NE	2.41"
0109000104	Saugus River - Frontal Broad Sound	MA-ES-8	Marblehead 0.8 SW	1.98"
0109000105	Mystic River - Frontal Boston Harbor	MA-MD-123	Lexington 1.3 SE	2.60"
0109000105	Mystic River - Frontal Boston Harbor	MA-MD-7	Winchester 0.7 SE	2.78"
0109000105	Mystic River - Frontal Boston Harbor	MA-MD-44	Medford 1.2 W	2.55"
0109000105	Mystic River - Frontal Boston Harbor	MA-MD-11	Cambridge 0.9 NNW	2.45"
0109000105	Mystic River - Frontal Boston Harbor	MA-SF-10	Chelsea 0.8 N	2.45"
0109000106	Upper Charles River	MA-WR-1	Milford 2.3 NNW	2.95"
0109000106	Upper Charles River	MA-MD-106	Holliston 2.4 W	2.99"
0109000106	Upper Charles River	MA-MD-55	Holliston 0.7 W	3.07"
0109000106	Upper Charles River	MA-MD-42	Holliston 0.8 S	3.22"

0109000106	Upper Charles River	MA-MD-158	Sherborn 1.1 NW	3.20"
0109000106	Upper Charles River	MA-NF-11	Millis 2.0 SW	3.60"
0109000106	Upper Charles River	MA-NF-50	Millis 1.4 ENE	3.13"
0109000107	Lower Charles River - Frontal Boston Harbor	MA-MD-120	Natick 1.9 NNE	3.05"
0109000107	Lower Charles River - Frontal Boston Harbor	MA-MD-134	Somerville 0.5 SSE	2.52"
0109000108	Neponset River - Frontal Boston Harbor	MA-NF-1	Norwood 1.3 NW	3.01"
0109000108	Neponset River - Frontal Boston Harbor	MA-NF-54	Quincy 1.2 W	2.89"
0109000109	Whitmans Pond - Frontal Boston Harbor	MA-NF-32	Quincy 1.8 WSW	3.01"
0109000109	Whitmans Pond - Frontal Boston Harbor	MA-NF-39	Weymouth 2.3 N	2.96"
0109000109	Whitmans Pond - Frontal Boston Harbor	MA-PL-36	Hingham 0.8 ESE	2.85"
01090002	Cape Cod			
0109000201	North River - Frontal Massachusetts Bay	MA-PL-43	Hanson 0.7 NW	2.70"
0109000201	North River - Frontal Massachusetts Bay	MA-PL-5	Kingston 3.3 WNW	2.49"
0109000201	North River - Frontal Massachusetts Bay	MA-PL-47	Plymouth 1.1 NNW	2.90"
0109000201	North River - Frontal Massachusetts Bay	MA-PL-2	Sagamore Beach 1.0 NW	2.98"
0109000202	Cape Cod	MA-BA-8	Falmouth 1.8 WSW	3.86"
0109000202	Cape Cod	MA-BA-2	Falmouth 3.1 NNW	3.48"
0109000202	Cape Cod	MA-BA-57	Falmouth 5.7 N	2.85"
0109000202	Cape Cod	MA-BA-13	Falmouth 0.6 NNW	4.16"
0109000202	Cape Cod	MA-BA-50	Falmouth 5.4 NNE	2.75"
0109000202	Cape Cod	MA-BA-17	East Falmouth 1.2 WNW	3.19"
0109000202	Cape Cod	MA-BA-19	East Falmouth 0.7 NW	3.77"
0109000202	Cape Cod	MA-BA-11	East Falmouth 1.4 ESE	3.34"
0109000202	Cape Cod	MA-BA-45	Sandwich 0.9 NNE	2.94"
0109000202	Cape Cod	MA-BA-79	Mashpee 0.8 SSW	2.88"
0109000202	Cape Cod	MA-BA-78	Mashpee 4.6 S	3.54"
0109000202	Cape Cod	MA-BA-10	East Sandwich 2.3 SE	3.67"
0109000202	Cape Cod	MA-BA-59	Barnstable 3.6 W	3.61"
0109000202	Cape Cod	MA-BA-76	Barnstable 0.7 NE	3.04"
0109000202	Cape Cod	MA-BA-22	Yarmouth 0.9 NNW	2.92"
0109000202	Cape Cod	MA-BA-72	Yarmouth 2.0 S	2.76"
0109000202	Cape Cod	MA-BA-1	Yarmouth 2.3 SSE	2.58"
0109000202	Cape Cod	MA-BA-80	Brewster 1.4 W	2.52"
0109000202	Cape Cod	MA-BA-52	Truro 0.8 E	2.44"
0109000202	Cape Cod	MA-BA-27	Wellfleet 0.7 NW	2.14"
0109000202	Cape Cod	MA-BA-36	Harwich 2.6 ENE	2.32"
0109000202	Cape Cod	MA-BA-42	Orleans 1.8 S	2.56"
0109000202	Cape Cod	MA-BA-51	Orleans 3.0 S	2.41"
0109000202	Cape Cod	MA-BA-12	Orleans 1.1 E	2.23"
0109000202	Cape Cod	MA-BA-30	Eastham 0.6 SW	2.15"
0109000202	Cape Cod	MA-BA-43	Chatham 0.4 WSW	1.81"

0109000203	Mattapoissett River - Frontal Buzzards Bay	MA-BA-64	Sandwich 1.5 SSE	3.02"
0109000204	Paskamanset River - Frontal Buzzards Bay	MA-BR-14	Dartmouth 2.5 SSW	2.74"
0109000204	Paskamanset River - Frontal Buzzards Bay	MA-BR-52	New Bedford 4.3 N	2.46"
0109000205	Sakonnet Point - Frontal Rhode Island Sound	RI-NW-5	Little Compton 1.7 NW	2.89"
0109000205	Sakonnet Point - Frontal Rhode Island Sound	RI-NW-17	Tiverton 4.4 SSE	2.63"
0109000205	Sakonnet Point - Frontal Rhode Island Sound	RI-NW-7	Little Compton 0.6 E	2.61"
0109000205	Sakonnet Point - Frontal Rhode Island Sound	MA-BR-37	Westport 0.9 ESE	3.04"
0109000206	Elizabeth Islands - Marthas Vineyard	MA-DK-5	West Tisbury 2.9 N	6.66"
0109000206	Elizabeth Islands - Marthas Vineyard	MA-DK-9	West Tisbury 0.4 S	5.43"
0109000206	Elizabeth Islands - Marthas Vineyard	MA-DK-2	Vineyard Haven 0.8 WSW	5.91"
0109000207	Nantucket Island	MA-NT-6	Nantucket 0.6 SSE	4.95"
01090003	Blackstone			
0109000301	Upper Blackstone River	MA-WR-41	Auburn 2.6 SW	2.76"
0109000301	Upper Blackstone River	MA-WR-70	Grafton 1.5 W	2.69"
0109000302	Lower Blackstone River	RI-PR-50	Harrisville 1.2 SSE	3.33"
0109000302	Lower Blackstone River	RI-PR-28	North Smithfield 0.7 SE	3.06"
0109000302	Lower Blackstone River	RI-PR-63	Woonsocket 1.5 NW	3.37"
0109000302	Lower Blackstone River	RI-PR-45	Manville 0.4 WSW	3.55"
0109000302	Lower Blackstone River	MA-NF-26	Bellingham 2.4 S	3.60"
0109000302	Lower Blackstone River	RI-PR-55	Cumberland Hill 3.6 NNE	4.12"
01090004	Narragansett			
0109000401	Upper Taunton River	MA-BR-30	Taunton 3.9 N	2.62"
0109000401	Upper Taunton River	MA-NF-31	Stoughton 1.2 E	3.46"
0109000401	Upper Taunton River	MA-PL-23	Pembroke 2.8 SW	2.72"
0109000402	Middle Taunton River	MA-PL-31	Bridgewater 1.8 SE	2.52"
0109000402	Middle Taunton River	MA-PL-17	Plympton 0.9 NNE	2.54"
0109000403	Threemile River	MA-NF-19	Foxborough 1.8 SSW	3.73"
0109000403	Threemile River	MA-BR-55	NWS Boston/Norton 2.5 ESE	2.73"
0109000404	Ten Mile River	MA-NF-58	Plainville 0.6 NNW	3.27"
0109000404	Ten Mile River	MA-BR-23	Attleboro 0.9 ENE	3.72"
0109000405	Woonasquatucket River-Moshassuck River	RI-PR-33	Greenville 0.7 NNW	3.20"
0109000405	Woonasquatucket River-Moshassuck River	RI-PR-51	North Smithfield 0.6 S	2.96"
0109000405	Woonasquatucket River-Moshassuck River	RI-PR-82	Providence 1.6 NNW	3.40"
0109000405	Woonasquatucket River-Moshassuck River	RI-PR-53	Providence 1.7 N	2.71"
0109000406	Pawtuxet River	RI-KN-21	Coventry 1.9 NE	3.72"
0109000406	Pawtuxet River	RI-PR-57	Cranston 1.2 SSE	3.60"
0109000407	Palmer River	RI-BR-11	Bristol 2.0 NNW	2.79"
0109000407	Palmer River	MA-BR-2	Rehoboth 2.1 N	3.41"
0109000408	Lower Taunton River - Frontal Mount Hope Bay	MA-BR-61	Mansfield 2.4 ENE	2.76"
0109000408	Lower Taunton River - Frontal Mount Hope Bay	MA-BR-3	Norton 1.8 NNE	4.36"
0109000408	Lower Taunton River - Frontal Mount Hope Bay	MA-BR-16	Somerset 0.4 SSE	3.22"

0109000408	Lower Taunton River - Frontal Mount Hope Bay	MA-BR-58	Dighton 3.3 NNW	2.96"
0109000408	Lower Taunton River - Frontal Mount Hope Bay	MA-BR-8	Dighton 1.1 WSW	3.26"
0109000409	Narragansett Bay	RI-KN-17	East Greenwich 1.2 NNE	3.45"
0109000409	Narragansett Bay	RI-WS-54	North Kingstown 2.7 WSW	3.87"
0109000409	Narragansett Bay	RI-WS-31	Kingston 7.5 NNE	4.00"
0109000409	Narragansett Bay	RI-WS-44	North Kingstown 1.5 SSW	3.82"
0109000409	Narragansett Bay	RI-KN-15	Warwick 4.3 SSW	3.67"
0109000409	Narragansett Bay	RI-KN-2	East Greenwich 2.3 ESE	3.70"
0109000409	Narragansett Bay	RI-KN-31	Warwick 0.8 ENE	3.46"
0109000409	Narragansett Bay	RI-PR-67	Providence 1.6 NE	3.02"
0109000409	Narragansett Bay	RI-PR-84	Providence 2.7 NNE	3.34"
0109000409	Narragansett Bay	RI-NW-18	Jamestown 0.3 SSE	3.38"
0109000409	Narragansett Bay	RI-NW-4	Middletown 1.1 SW	2.76"
0109000409	Narragansett Bay	RI-NW-19	Portsmouth 2.3 S	2.75"
0109000409	Narragansett Bay	RI-NW-16	Portsmouth 1.3 S	3.35"
0109000409	Narragansett Bay	MA-BR-63	Swansea 2.1 W	3.17"
0109000409	Narragansett Bay	RI-NW-11	Tiverton 0.8 SSW	2.90"
0109000409	Narragansett Bay	RI-NW-20	Tiverton 1.0 SSW	2.98"
01090005	Pawcatuck-Wood			
0109000502	Upper Pawcatuck River	RI-WS-46	Westerly 3.4 E	3.27"
0109000502	Upper Pawcatuck River	RI-WS-42	Richmond 4.6 NNE	4.08"
0109000502	Upper Pawcatuck River	RI-WS-45	Charlestown 4.7 NNE	4.44"
0109000502	Upper Pawcatuck River	RI-WS-37	Kingston 2.4 SW	3.64"
0109000503	Lower Pawcatuck River	CT-NL-40	Pawcatuck 1.8 SSE	4.01"
0109000503	Lower Pawcatuck River	RI-WS-30	Westerly 2.4 NNW	3.78"
0109000503	Lower Pawcatuck River	RI-WS-47	Westerly 0.8 WNW	3.88"
0109000504	Frontal Block Island Sound	RI-WS-36	Charlestown 3.0 WSW	3.68"
0109000504	Frontal Block Island Sound	RI-WS-26	Charlestown 1.1 ENE	3.70"
0109000504	Frontal Block Island Sound	RI-WS-55	Wakefield 0.8 ENE	3.82"
01100001	Quinebaug			
0110000102	French River	MA-WR-68	Oxford 0.9 SSW	3.24"
0110000103	Fivemile River	CT-WN-6	Dayville 2.0 ENE	3.57"
0110000105	Moosup River	CT-WN-8	Moosup 1.7 NE	4.13"
0110000106	Pachaug River	CT-NL-21	Griswold 0.9 N	3.66"
01100002	Shetucket			
0110000201	Willimantic River	CT-TL-18	Hebron 5.3 NW	3.67"
0110000201	Willimantic River	CT-TL-33	Tolland 3.6 NNE	3.13"
0110000201	Willimantic River	CT-TL-2	Staffordville 0.4 NNW	3.21"
0110000202	Natchaug River	CT-TL-27	Willington 2.7 SE	3.61"
0110000202	Natchaug River	CT-TL-30	Mansfield Center 2.7 NE	3.55"
0110000202	Natchaug River	CT-WN-12	Eastford 2.0 W	3.51"

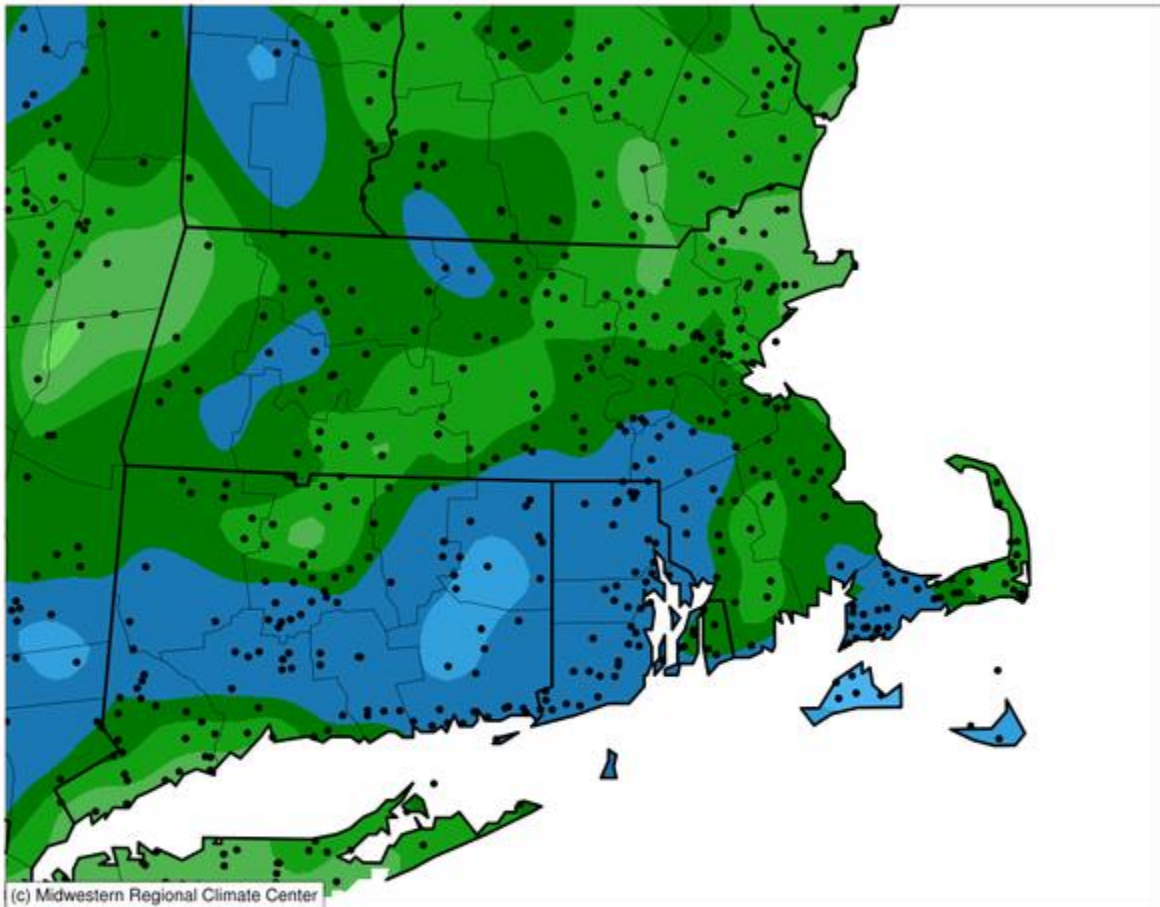
0110000203	Shetucket River	CT-NL-10	Norwich 2.5 NNE	4.31"
01100003	Thames			
0110000302	Thames River-Frontal New London Harbor	CT-NL-5	Oakdale 2.6 WNW	4.41"
0110000302	Thames River-Frontal New London Harbor	CT-NL-6	New London 1.0 NNW	3.64"
0110000303	Mystic River - Frontal Fishers Island Sound	CT-NL-38	Old Lyme 3.4 ESE	3.21"
0110000303	Mystic River - Frontal Fishers Island Sound	CT-NL-29	East Lyme 0.5 SW	3.58"
0110000303	Mystic River - Frontal Fishers Island Sound	CT-NL-32	Niantic 1.1 SW	3.13"
0110000303	Mystic River - Frontal Fishers Island Sound	CT-NL-22	Central Waterford 2.7 SSW	3.14"
0110000303	Mystic River - Frontal Fishers Island Sound	CT-NL-46	Mystic 3.4 NW	4.21"
0110000303	Mystic River - Frontal Fishers Island Sound	CT-NL-37	Mystic 1.6 W	4.08"
0110000303	Mystic River - Frontal Fishers Island Sound	CT-NL-19	Mystic 0.9 W	3.66"
0110000303	Mystic River - Frontal Fishers Island Sound	CT-NL-24	Stonington 1.4 NNW	4.04"
0110000303	Mystic River - Frontal Fishers Island Sound	CT-NL-18	Stonington 0.5 NNE	3.99"
01100004	Quinnipiac			
0110000401	Quinnipiac River	CT-NH-14	Prospect 1.9 ENE	3.95"
0110000401	Quinnipiac River	CT-HR-55	Southington 1.7 WNW	3.33"
0110000401	Quinnipiac River	CT-HR-83	Plainville 1.7 SW	3.61"
0110000401	Quinnipiac River	CT-HR-23	Southington 0.9 SSE	3.51"
0110000401	Quinnipiac River	CT-HR-76	Southington 1.0 ENE	3.31"
0110000401	Quinnipiac River	CT-NH-44	Wallingford Center 1.9 WNW	3.91"
0110000401	Quinnipiac River	CT-NH-43	Wallingford Center 3.3 NNW	3.99"
0110000401	Quinnipiac River	CT-NH-42	Wallingford Center 1.1 N	3.60"
0110000401	Quinnipiac River	CT-NH-72	Northford 0.8 SW	2.98"
0110000402	Hammonasset River - Frontal Long Island Sound	CT-NH-56	Guilford Center 2.7 WSW	2.57"
0110000402	Hammonasset River - Frontal Long Island Sound	CT-NH-50	Madison Center 4.1 N	3.23"
0110000402	Hammonasset River - Frontal Long Island Sound	CT-MD-21	Killingworth 2.6 ESE	3.31"
0110000402	Hammonasset River - Frontal Long Island Sound	CT-MD-27	Clinton 3.7 N	2.96"
0110000403	Mill River - Frontal Long Island Sound	CT-NH-39	West Haven 0.8 W	2.46"
01100005	Housatonic			
0110000501	Headwaters Housatonic River	MA-BE-11	Great Barrington 3.0 N	2.87"
0110000501	Headwaters Housatonic River	MA-BE-22	Dalton 2.9 SW	2.10"
0110000503	Konkapot River-Housatonic River	CT-LT-28	Canaan 4.2 ESE	2.74"
0110000504	Macedonia Brook - Housatonic River	CT-LT-20	Warren 2.4 WNW	3.12"
0110000506	Candlewood Lake-Housatonic River	CT-LT-22	New Milford 5.3 SSW	4.39"
0110000508	Still River - Housatonic River	CT-FR-43	Bethel 0.5 E	3.20"
0110000508	Still River - Housatonic River	CT-FR-41	Bethel 3.5 NNE	3.57"
0110000508	Still River - Housatonic River	CT-FR-9	Brookfield 3.3 SSE	3.82"
0110000509	Pomperaug River	CT-LT-34	Woodbury Center 1.5 SSW	3.17"
0110000512	Outlet Naugatuck River	CT-NH-47	Seymour 1.5 NE	3.34"
0110000512	Outlet Naugatuck River	CT-NH-45	Naugatuck 1.7 NNE	2.94"
0110000512	Outlet Naugatuck River	CT-NH-22	Prospect 0.5 SW	3.19"

0110000513	Housatonic River - Frontal Long Island Sound	CT-FR-23	Shelton 1.3 W	2.25"
0110000513	Housatonic River - Frontal Long Island Sound	CT-FR-46	Stratford 0.2 ESE	2.41"
0110000513	Housatonic River - Frontal Long Island Sound	CT-FR-55	Shelton 2.7 SSE	2.03"
01100006	Saugatuck			
0110000601	Saugatuck River - Frontal Long Island Sound	CT-FR-58	Ridgefield 3.6 N	3.28"
0110000601	Saugatuck River - Frontal Long Island Sound	CT-FR-64	Bethel 4.5 SSE	2.67"
0110000601	Saugatuck River - Frontal Long Island Sound	CT-FR-31	Newtown 4.6 SSW	2.70"
0110000602	Norwalk River - Frontal Norwalk Harbor	CT-FR-59	New Canaan 3.8 N	2.66"
0110000602	Norwalk River - Frontal Norwalk Harbor	CT-FR-29	Ridgefield 1.9 SSE	3.04"
0110000602	Norwalk River - Frontal Norwalk Harbor	CT-FR-63	Wilton 1.9 NW	2.86"
0110000602	Norwalk River - Frontal Norwalk Harbor	CT-FR-3	New Canaan 1.9 ENE	2.24"
0110000602	Norwalk River - Frontal Norwalk Harbor	CT-FR-25	Norwalk 2.9 NNW	2.51"
0110000603	Pequonnock River - Frontal Long Island Sound	CT-FR-20	Westport 2.5 ENE	1.64"
0110000603	Pequonnock River - Frontal Long Island Sound	CT-FR-60	Fairfield 1.5 NE	2.14"
0110000603	Pequonnock River - Frontal Long Island Sound	CT-FR-57	Trumbull 0.9 W	1.92"
0110000603	Pequonnock River - Frontal Long Island Sound	CT-FR-32	Monroe 0.8 W	2.94"
0110000603	Pequonnock River - Frontal Long Island Sound	CT-FR-70	Bridgeport 2.9 NNW	2.59"
0110000603	Pequonnock River - Frontal Long Island Sound	CT-FR-67	Trumbull 1.2 S	2.26"
0110000603	Pequonnock River - Frontal Long Island Sound	CT-FR-26	Stratford 0.9 W	2.03"
0110000604	Mianus River-Rippowam River	CT-FR-39	Stamford 4.2 S	2.22"
02020003	Hudson-Hoosic			
0202000306	Upper Hoosic River	MA-BE-21	Cheshire 0.5 NNW	2.02"
02020006	Middle Hudson			
0202000603	Wynants Kill - Hudson River	NY-AB-21	NWS Albany	2.80"
02030203	Long Island Sound			
0203020300	Long Island Sound	NY-SF-114	Fishers Island 0.5 NE	4.06"

We have a knack for being in places with high precipitation totals. The palest of blue colors are for over 6”.

Accumulated Precipitation (in)

May 01, 2020 to May 31, 2020



0.01 0.1 0.25 0.5 1 1.5 2 2.5 3 4 5 6 8

Stations from the following networks used: COOP, FAA, CoCoRaHS,

Midwestern Regional Climate Center

cli-MATE: MRCC Application Tools Environment

Generated at: 6/13/2020 10:38:06 AM CDT

“We do not live at the airport”

The rains arrived before midnight on May 1. With the airports reporting from midnight to midnight, their totals are lower than our network reports from around 7am-7am. With that said, our network’s listed stations averaged 3.00” and these airport stations listed averaged 2.33”. A dry month of May. Watch the month of June. We could use the rain.

Our network does not use automated gauges! And we do not live at the airport!

Location	Station ID	May 2020 Precip	May departure from normal	Mar-Apr-May Precip	3 month departure from normal	Dec-May Precip	6 month departure from normal	Jun-May Precip	12 month departure from normal
White Plains NY	HPN	1.93"	-2.19"	10.19"	-2.85"	20.35"	-3.78"	44.35"	-5.00"
Danbury CT	DXR	2.18"	-2.26"	9.57"	-3.21"	19.24"	-3.77"	38.66"	-11.21"
New Haven CT	HVN	1.52"	-2.65"	10.62"	-2.28"	21.60"	-0.99"	42.22"	-4.89"
Meriden CT	MMK	3.01"	-1.16"	14.48"	1.58"	28.19"	5.60"	46.64"	-0.47"
Hartford CT	HFD	2.28"	-1.61"	10.49"	-0.85"	19.66"	-0.83"	41.63"	-1.97"
Willimantic CT	IJD	3.16"	-0.83"	11.88"	-0.96"	20.95"	-2.57"	41.67"	-6.75"
New London CT	GON	2.89"	-0.96"	11.54"	-0.88"	21.82"	-0.46"	47.81"	1.32"
Westerly RI	WST	3.17"	-0.62"	10.72"	-2.54"	20.34"	-3.07"	49.89"	2.50"
Newport RI	UUU	2.68"	-0.84"	11.57"	-1.02"	20.24"	-2.89"	43.46"	-2.87"
New Bedford MA	EWB	1.16"	-2.53"	6.70"	-6.37"	15.70"	-8.94"	37.32"	-11.04"
Hyannis MA	HYA	2.57"	-0.93"	10.69"	-2.29"	23.82"	-0.99"	49.27"	1.58"
Nantucket MA	ACK	4.11"	0.69"	11.07"	-0.34"	24.09"	2.55"	41.82"	-2.60"
Marthas Vineyard MA	MVY	5.02"	1.71"	13.44"	1.71"	26.32"	4.18"	49.86"	4.70"
Taunton MA	TAN	1.72"	-1.87"	11.76"	-1.55"	23.93"	-1.24"	45.35"	-4.39"
Plymouth MA	PYM	2.64"	-1.05"	13.50"	-0.08"	27.69"	2.43"	58.77"	9.62"
Norwood MA	OWD	2.65"	-1.03"	13.93"	1.61"	24.00"	0.92"	44.58"	-2.48"
Bedford MA	BED	1.62"	-2.23"	9.30"	-2.89"	18.55"	-3.80"	40.54"	-5.17"
Beverly MA	BVY	2.17"	-1.63"	12.04"	-0.69"	23.44"	0.71"	43.27"	-2.91"
Lawrence MA	LWM	1.75"	-2.01"	10.58"	-1.12"	21.07"	0.58"	45.52"	2.36"
Fitchburg MA	FIT	1.85"	-2.21"	10.59"	-1.97"	15.61"	-7.02"	35.90"	-11.24"
Orange MA	ORE	2.28"	-1.56"	10.26"	-0.38"	20.14"	0.92"	42.34"	-0.21"
Westfield MA	BAF	1.84"	-2.60"	10.37"	-2.54"	20.37"	-2.06"	40.23"	-8.16"
North Adams MA	AQW	1.73"	-2.38"	7.78"	-3.71"	15.14"	-4.96"	39.08"	-7.53"

Rulers of the Snow

We are the Rulers of the Snow. We define where the snow is and where it is not.

It stays stretched to the next page! Another record long list of 83 stations, those that measured snow fall and snow depth for all days in April. Even on Marthas Vineyard! Even on Fishers Island!

Keep making this list even longer. Using the mobile app? Look at the 2nd page of the mobile app, and fill in those snow values. Make a snow fall and snow depth measurement with every Daily Report, if you can safely do so, ***all year round.***

Station	Name	May 2020 Snowfall	Station	Name	May 2020 Snowfall
MA-BE-21	Cheshire 0.5 NNW	1.3"	RI-PR-33	Greenville 0.7 NNW	0.0"
MA-HS-7	Plainfield 2.2 SW	1.2"	RI-PR-51	North Smithfield 0.6 S	0.0"
CT-HR-22	East Hartford 1.3 E	0.8"	RI-KN-2	East Greenwich 2.3 ESE	0.0"
MA-WR-75	Warren 2.4 WSW	0.7"	RI-WS-37	Kingston 2.4 SW	0.0"
CT-TL-2	Staffordville 0.4 NNW	0.5"	RI-WS-42	Richmond 4.6 NNE	0.0"
CT-LT-15	Colebrook 1.0 NE	0.3"	RI-WS-46	Westerly 3.4 E	0.0"
CT-NL-10	Norwich 2.5 NNE	0.3"	RI-WS-55	Wakefield 0.8 ENE	0.0"
CT-TL-18	Hebron 5.3 NW	0.2"	RI-NW-11	Tiverton 0.8 SSW	0.0"
CT-FR-3	New Canaan 1.9 ENE	0.1"	RI-NW-7	Little Compton 0.6 E	0.0"
CT-FR-9	Brookfield 3.3 SSE	0.1"	MA-BR-30	Taunton 3.9 N	0.0"
CT-LT-22	New Milford 5.3 SSW	0.0"	MA-BR-61	Mansfield 2.4 ENE	0.0"
CT-LT-34	Woodbury Center 1.5 SSW	0.0"	MA-BR-8	Dighton 1.1 WSW	0.0"
CT-FR-23	Shelton 1.3 W	0.0"	MA-MD-104	Littleton 2.8 NNW	0.0"
CT-FR-25	Norwalk 2.9 NNW	0.0"	MA-MD-115	Hudson 1.4 NW	0.0"
CT-FR-29	Ridgefield 1.9 SSE	0.0"	MA-MD-12	Acton 1.3 SW	0.0"
CT-NH-43	Wallingford Center 3.3 NNW	0.0"	MA-MD-125	Tewksbury 3.6 SSE	0.0"
CT-NH-45	Naugatuck 1.7 NNE	0.0"	MA-MD-126	Melrose 0.5 NE	0.0"
MA-FR-10	Conway 0.9 SW	0.0"	MA-MD-156	Marlborough 2.8 ENE	0.0"
MA-FR-12	Sunderland 1.3 SE	0.0"	MA-MD-44	Medford 1.2 W	0.0"
MA-FR-13	Conway 2.9 NW	0.0"	MA-MD-47	West Townsend 0.5 W	0.0"
MA-FR-17	Buckland 1.8 ESE	0.0"	MA-MD-51	Maynard 0.7 ESE	0.0"
MA-FR-31	Colrain 3.7 WNW	0.0"	MA-MD-7	Winchester 0.7 SE	0.0"

MA-HS-26	Easthampton 0.5 SW	0.0"	MA-MD-81	Wakefield 0.5 NNW	0.0"
MA-HD-25	Ludlow 2.3 SW	0.0"	MA-ES-12	Boxford 2.4 S	0.0"
CT-HR-8	North Granby 1.3 ENE	0.0"	MA-ES-4	Groveland 0.5 WSW	0.0"
CT-HR-99	Suffield 3.6 ENE	0.0"	MA-ES-41	Danvers 0.8 ESE	0.0"
CT-TL-27	Willington 2.7 SE	0.0"	MA-ES-48	Andover 0.6 E	0.0"
CT-TL-35	Somersville 0.2 ENE	0.0"	MA-NF-1	Norwood 1.3 NW	0.0"
CT-MD-21	Killingworth 2.6 ESE	0.0"	MA-NF-11	Millis 2.0 SW	0.0"
CT-MD-23	Higganum 0.7 N	0.0"	MA-NF-58	Plainville 0.6 NNW	0.0"
MA-WR-41	Auburn 2.6 SW	0.0"	MA-PL-36	Hingham 0.8 ESE	0.0"
MA-WR-42	Northborough 2.3 N	0.0"	MA-BA-12	Orleans 1.1 E	0.0"
MA-WR-54	Barre 1.4 NNE	0.0"	MA-BA-2	Falmouth 3.1 NNW	0.0"
CT-NL-19	Mystic 0.9 W	0.0"	MA-BA-45	Sandwich 0.9 NNE	0.0"
CT-NL-21	Griswold 0.9 N	0.0"	MA-BA-50	Falmouth 5.4 NNE	0.0"
CT-NL-24	Stonington 1.4 NNW	0.0"	MA-BA-57	Falmouth 5.7 N	0.0"
CT-NL-29	East Lyme 0.5 SW	0.0"	MA-BA-64	Sandwich 1.5 SSE	0.0"
CT-NL-32	Niantic 1.1 SW	0.0"	MA-BA-72	Yarmouth 2.0 S	0.0"
CT-NL-40	Pawcatuck 1.8 SSE	0.0"	MA-BA-76	Barnstable 0.7 NE	0.0"
CT-NL-46	Mystic 3.4 NW	0.0"	MA-DK-2	Vineyard Haven 0.8 WSW	0.0"
CT-NL-6	New London 1.0 NNW	0.0"	NY-SF-114	Fishers Island 0.5 NE	0.0"
RI-PR-28	North Smithfield 0.7 SE	0.0"			

May 2020 as a calendar. A count of your Daily Reports by Date. Magenta colors are for the highest counts. Lime green color for the lowest counts.

376 Reports per Day was our record reporting average for April, with a single day record of 412 reports submitted on May 16th.

May 2020

Sun	Mon	Tue	Wed	Thu	Fri	Sat
					395 ¹	380 ²
370 ³	376 ⁴	368 ⁵	364 ⁶	389 ⁷	375 ⁸	395 ⁹
370 ¹⁰	365 ¹¹	389 ¹²	368 ¹³	364 ¹⁴	399 ¹⁵	412 ¹⁶
366 ¹⁷	378 ¹⁸	366 ¹⁹	362 ²⁰	369 ²¹	364 ²²	378 ²³
382 ²⁴	378 ²⁵	368 ²⁶	364 ²⁷	368 ²⁸	383 ²⁹	394 ³⁰
359 ³¹						

D0 has returned to our area. D1 is close in coming. Keep monitoring and reporting Conditions where you are.

Every drop counts and zeros do too!

U.S. Drought Monitor Northeast RFC

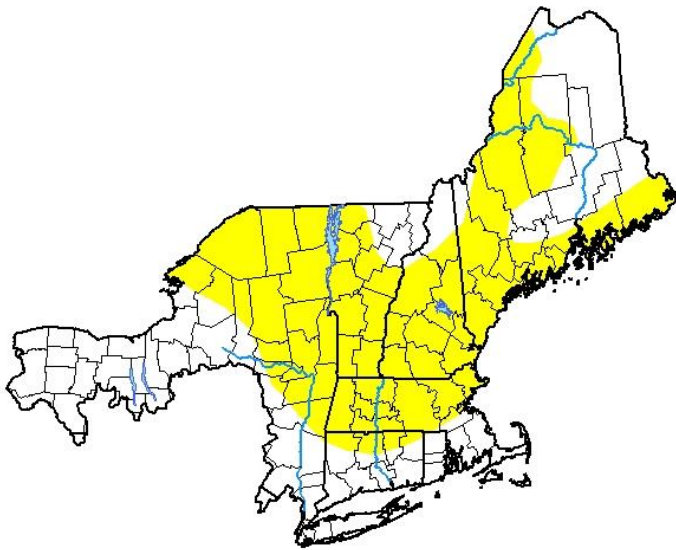
June 9, 2020

(Released Thursday, Jun. 11, 2020)

Valid 8 a.m. EDT

Drought Conditions (Percent Area)

	None	D0	D1	D2	D3	D4
Current	44.66	55.34	0.00	0.00	0.00	0.00
Last Week <small>06-02-2020</small>	82.77	17.23	0.00	0.00	0.00	0.00
3 Months Ago <small>03-10-2020</small>	100.00	0.00	0.00	0.00	0.00	0.00
Start of Calendar Year <small>12-31-2019</small>	100.00	0.00	0.00	0.00	0.00	0.00
Start of Water Year <small>10-01-2019</small>	66.91	33.09	0.00	0.00	0.00	0.00
One Year Ago <small>06-11-2019</small>	100.00	0.00	0.00	0.00	0.00	0.00



Intensity:

- None
- D0 Abnormally Dry
- D1 Moderate Drought
- D2 Severe Drought
- D3 Extreme Drought
- D4 Exceptional Drought

The Drought Monitor focuses on broad-scale conditions. Local conditions may vary. For more information on the Drought Monitor, go to <https://droughtmonitor.unl.edu/About.aspx>

Author:

Brad Pugh
CPC/NOAA



droughtmonitor.unl.edu

For a viewing explanation on the Drought Monitor, the CoCoRaHS animated video is on [YouTube](#).

Wrap up

Be a hero. Report your zeros. Be strong with your reporting when the rain does not come. Just like last June, the spring rains have ended. The change shows in the reporting, so please submit your zeros, along with your precip reports, and strive not to miss any days.

Hurricane Season began on June 1. Inland flooding. Damaging winds. Long term power outages. Coastal flooding. Now is a good time to get into the habit of staying informed and to have a plan in place should a storm come our way this season.

Wednesday June 17th will mark the 22nd year since CoCoRaHS started. Celebrate and take in the Message of the Day. Happy Birthday to CoCoRaHS.

Summer begins with the summer solstice and that occurs this year on June 20st at 5:54PM EDT. Soak up the sunshine, the early sunrises and the late sunsets before we start to lose daylight in July.

Thank you for all that you do for CoCoRaHS, whether in the past, present and in the days to come.