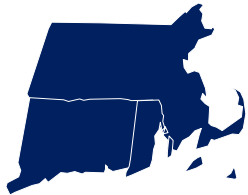




# Southern



# New England

**August 2018**

The sun shone for the first half of July. The rains returned in the second half of the July. The variable nature of that rain was on display for all to see with more rain falling in the western half of our area, and less rain falling in the eastern half of our area. The widest range of rainfall totals for a month, from totals over 10", to totals under 1".

Three years ago, the conditions were not the same, but the talk of drought was more pronounced then as it is now. Growing from 150 observers then to over 350 observers now, does give us a better definition where drought conditions may or may not be. We are thankful that so many of you are part of our network, and reporting as often as you do. We work towards and look forward to more growth in the years to come.

Within this month's Newsletter: We lead off with Observers that made "The Grand List". Comments about Comments, including some of your Comments to make a point about Comments. With the rain that has returned, dirt will follow. Time to mention about cleaning the gauge. Rather than go to the website to look at your reports, have your reports appear as web link, a "Favorite", or as a QR Code, as a handy tool to check on your own reporting.

Let's get into it.

## **The “Grand” List**

Congratulations to all of these observers from our three states who have recently passed a milestone of 1000 Daily Reports.

### **3000 Daily Reports**

MA-BA-8 Falmouth 1.8 WSW

### **1000 Daily Reports**

MA-ES-20 Haverhill 0.7 N

MA-BA-47 Mashpee 2.4 WSW

MA-MD-34 Chelmsford 2.0 ENE

MA-FR-12 Sunderland 1.3 SE

# Observation Notes - Comments

Report precipitation throughout the year and find out that many others throughout the network notice your report. Whether the report was for rain or snow, trace or more than 1", others are looking and thinking to themselves... "Were you serious about that?" "That's an obvious decimal point error." "No way that could have happened." And more!

Mistakes do happen with reporting. Making a Comment can make you double check, or look again at, your reported amount.

If you can type, hunt and peck on the keyboard, retype your precipitation amount, please do so, by clarifying and verifying your reported amounts.

in. **\*Rain and Melted Snow to the nearest hundredth inch that has fallen in the gauge during the past 24 hours, or T for trace, or NA for unknown.** [?](#)

**Observation Notes:** (This will be available to the public) [?](#)

fell between 8am-9am.

Comments are looked at, and are included in your Water Year Summary, serving as a narration to your reported amounts.

Water Year Overview		Days in Water Year		Daily Prcp Observations			Multiday Prcp Observations	Hail Observations	Top of Page
Observation Date	Observation Time	Precipitation	Snowfall	Snowfall SWE	Snow Depth	Snow SWE	Notes		
10/1/2016	7:00 AM	0.16	0.0	0.00	0.0	0.00	Rain during the day, drizzle at night. Cloudy, dreary, and northerly wind all day night.		
10/2/2016	7:00 AM	0.01	0.0	0.00	0.0	0.00	Some light rain after obs time and overnight. Cloudy and cool all day and night.		
10/3/2016	7:00 AM	T	0.0	0.00	0.0	0.00	Some liquid on the bottom of the cylinder. Cloudy and cool day all day and night.		
10/4/2016	7:00 AM	T	0.0	0.00	0.0	0.00	A few drops of rain on the funnel at obs time.		
10/5/2016	7:00 AM	0.00	0.0	0.00	0.0	0.00	Heavy dew on the gauge.		
10/6/2016	7:00 AM	0.00	0.0	0.00	0.0	0.00	A beautifully clear day and night. Fog at obs time. Heavy dew on the gauge.		
10/7/2016	7:00 AM	0.00	0.0	0.00	0.0	0.00	After the morning fog burned off, another beautiful clear day and night. Dew on the gauge. Fog not as strong as yesterday.		
10/8/2016	7:00 AM	0.00	0.0	0.00	0.0	0.00	Another beautiful clear day and night. Dew on the gauge. Some light fog at obs time.		
10/9/2016	7:00 AM	0.02	0.0	0.00	0.0	0.00	Cloudy and overcast after noon. A few drops of rain at 4pm. Overnight rain for the 0.02"		
10/10/2016	7:00 AM	0.31	0.0	0.00	0.0	0.00	Rain fell from 8am to 2pm. Clearing occurred around sunset. Cool, clear, brisk start to Columbus Day		
10/11/2016	7:00 AM	0.00	0.0	0.00	0.0	0.00	Cool, crisp October day. Clear day and night. Dew on the gauge.		
10/12/2016	7:00 AM	0.00	0.0	0.00	0.0	0.00	Another beautiful clear day and night. Dew on the gauge. Some light fog at obs time.		
10/13/2016	7:00 AM	0.00	0.0	0.00	0.0	0.00	Clouds increased during the day. Overcast at night and at obs time. Light dew on the gauge.		

What will your narration be?

Here is how some of our observers are narrating their reports.

Perfectly said and shows that there was no mistake with the reported value.

6/24/2018	MA-BA-51	Orleans 3.0 S	0.57	.53 came from 730 to 1200 yesterday, than a light shower during the night around 100 or 200am	<a href="#">View</a>
-----------	----------	---------------	------	---	----------------------

Compare your reported amount to the forecasted amount.

7/18/2018	CT-WN-6	Dayville 2.0 ENE	1.14	QPF predicted 1.11. QPF off less than 3% from actual. Kudos to QPF.	<a href="#">View</a>
-----------	---------	------------------	------	---	----------------------

Quantities, times, and a Significant Weather Report for the 1.11" between 1:05pm and 1:43pm, a span of 38 minutes. Well done!

7/18/2018	MA-HD-25	Ludlow 2.3 SW	2.09	1.11 Inches of that 2.09 Inches occurred between 1:05 and 1:43 pm on 7/17/2018.	<a href="#">View</a>
-----------	----------	---------------	------	---	----------------------

Be a hero. Report your zeros. Make much ado about dew.

7/13/2018	CT-LT-22	New Milford 5.3 SSW	0.00	More zeroes! I know they are important. Our small brook is just about dried up. Clear and sunny this morning. Not too humid. About 61 degrees. Lots of dew.	<a href="#">View</a>
-----------	----------	---------------------	------	---	----------------------

Tell us all that the rain missed you....

7/16/2018	RI-PR-32	Providence 2.3 NE	0.00	It rained everywhere but here. Not a drop.	<a href="#">View</a>
-----------	----------	-------------------	------	--	----------------------

... and did not fall the same on all.

7/17/2018	RI-PR-55	Cumberland Hill 3.3 NE	0.00	I observed large puddles and wet roads about a mile south of my station. Never rained here.	<a href="#">View</a>
-----------	----------	------------------------	------	---	----------------------

Verifies the Trace, and provides the timing. Well done!

7/11/2018	MA-BE-5	Tyringham 1.5 WNW	T	A few drops of rain fell around 6:00 pm yesterday.	<a href="#">View</a>
-----------	---------	-------------------	---	--	----------------------

Put in a request for more rain, if you only get a little. We heard you!

7/23/2018	MA-BA-22	Yarmouth 0.9 NNW	0.07	send more!!	<a href="#">View</a>
-----------	----------	------------------	------	-------------	----------------------

Science is organized curiosity. Ever curious how many mornings "Dew" appears on the gauge? Make a Comment and count them for a month or longer. 11 times in July. Well done!

7/13/2018	MA-BA-64	Sandwich 1.5 SSE	0.00	Dew on gauge.	<a href="#">View</a>
-----------	----------	------------------	------	---------------	----------------------

Summer rains happen, come and go, and repeat the final total at the end. Clarifies and verifies the reported amount. Well done!

7/23/2018	CT-HR-22	East Hartford 1.3 E	1.01	obs time partly sunny, 75°, 7/22 rain during the day 7am, 6:30pm, 8:30pm, 10pm = 1.01"	<a href="#">View</a>
-----------	----------	---------------------	------	--	----------------------

Keep asking "Why". In next month's newsletter, we will write an article to answer this "Why". We watch the weather. We define the climate.

7/26/2018	MA-PL-47	Plymouth 1.1 NNW	0.16	So much for "heavy showers" and "street flooding." Hardly enough rain to wet the pavement. Why do these showers fizzle out when they get to SE Mass?	<a href="#">View</a>
-----------	----------	------------------	------	--	----------------------

Only 3 words tells us all when it rained and that the amount is probably less than 0.50"

7/22/2018	RI-WS-32	Kingston 6.9 NNW	0.21	light rain overnight	<a href="#">View</a>
-----------	----------	------------------	------	----------------------	----------------------

More about Comments in this [video](#).

## **Cleaning the Gauge**

Sometimes, just spraying the gauge with the garden hose won't do. Sometimes some soap and water are needed. Pick a day when no precipitation is in the forecast to give the gauge a good cleaning.

Whatever cleaning technique you use, make sure it involves nothing metal and nothing abrasive. Scratches on the plastic gauge can last for the life of the gauge and become detractive to look at every day. There is a cleaning technique involving a little bleach and a soft bottle brush. There is a cleaning technique involving a rolled-up newspaper.

The technique pictured below illustrates using a small sponge, cut long ways in half, a long wooden pasta spoon, and liquid soap.



**DIRT ON THE BOTTOM OF THE INNER CYLINDER**



**WOODEN PASTA SPOON, SOAP AND TWIST THE SPONGE IN A CIRCLE, CLEANING THE BOTTOM OF THE CYLINDER.**



**WHILE THE SOAP, WATER AND SPONGE ARE IN USE, CLEAN THE FUNNEL AND OUTER CYLINDER.**



**RINSED, CLEANED AND READY TO RETURN OUTSIDE TO ITS MOUNTING BRACKET**

Not only does it look clean, but reading the inner cylinder has a small meniscus.

## **Check on your own Reporting**

Periodically, we ask you to check on your Daily Reports and fill in missing reports where you can accurately do so. Station Precip Summary is a good place to go. Total Precip Summary is another place. The “History” function on your mobile reporting app is another good place to go.

Below is a weblink to use. The link below comes with three stations, and the date range for July 2018. You’re encouraged to change it to your own station, find another station to compare your reports with, and change the start and end dates. Once you have changed it to your liking, bookmark it. Make that web link a “Favorites” within your web browser.



For those that are digitally sophisticated, you can change the web link below to your station, a date range of your choosing, and create a QR Code, such as the one to the left.

<https://www.cocorahs.org/ViewData/StationPrecipSummary.aspx?station=CT-FR-9&station2=MA-NF-1&station3=MA-BR-55&startdate=07/01/2018&enddate=07/31/2018>

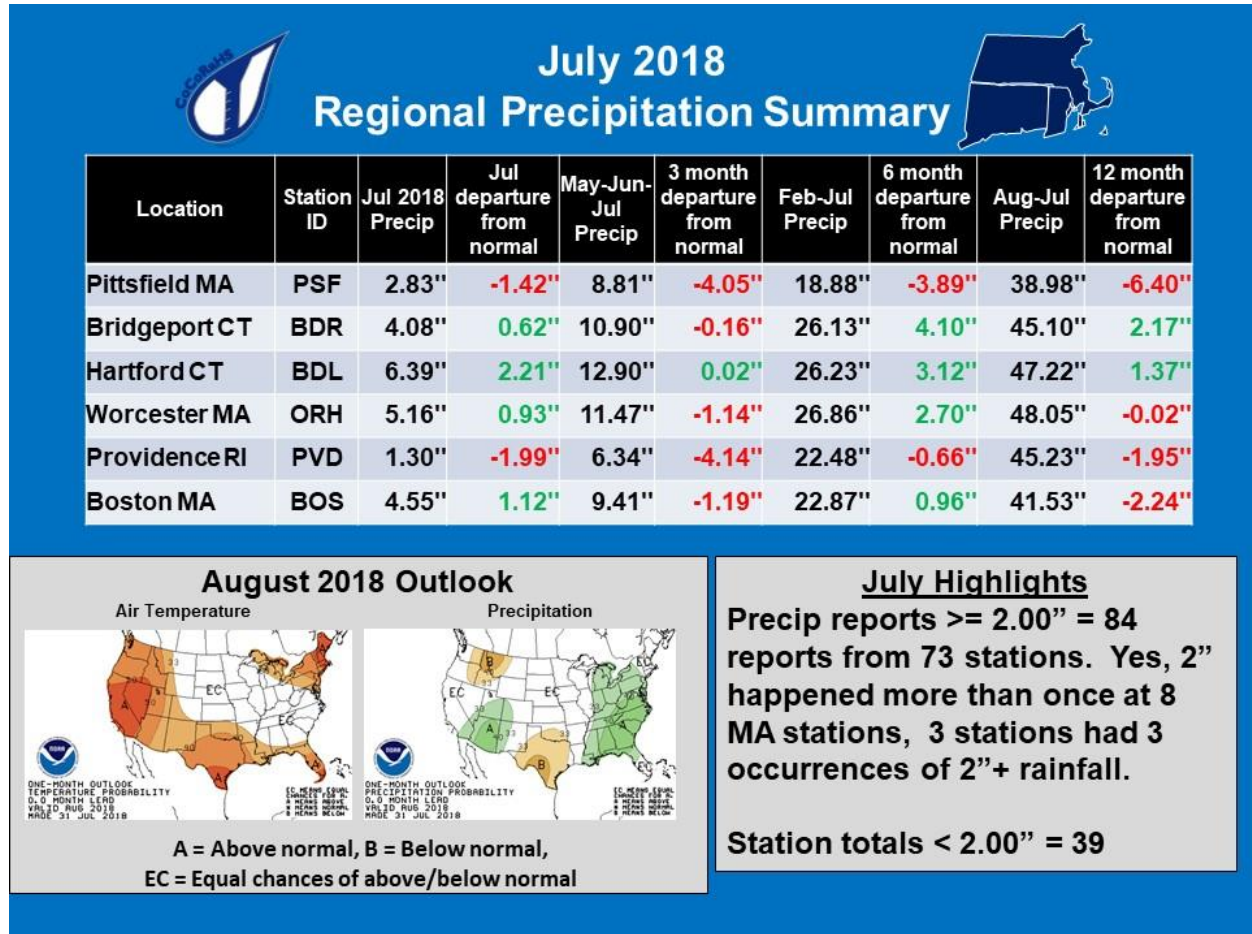
Why check on your reports? Why the newsletter listing of stations? Why the periodic reminders to fill in missing reports?

- Make a deposit. Make a withdrawal. As you enter reports each day, spend a little bit of time withdrawing information about these reports.
- Missing reports stand out and cause others to think “Did it rain/snow that day or was it rain/snow free?”
- Your reported totals increase in value with time, for a month, a few months, a year and longer. Missing reports cause that value to decline.
- Your reported totals, with few or no missing reports, are valuable in defining our climate, regardless of county or state.
- [Water Year Summaries](#) are a detailed listing of your reporting. You owe it to at least yourself to make your reporting as best as possible.



# Detail and Summary for July 2018

From the National Weather Service (NWS) Climate sites for July 2018.



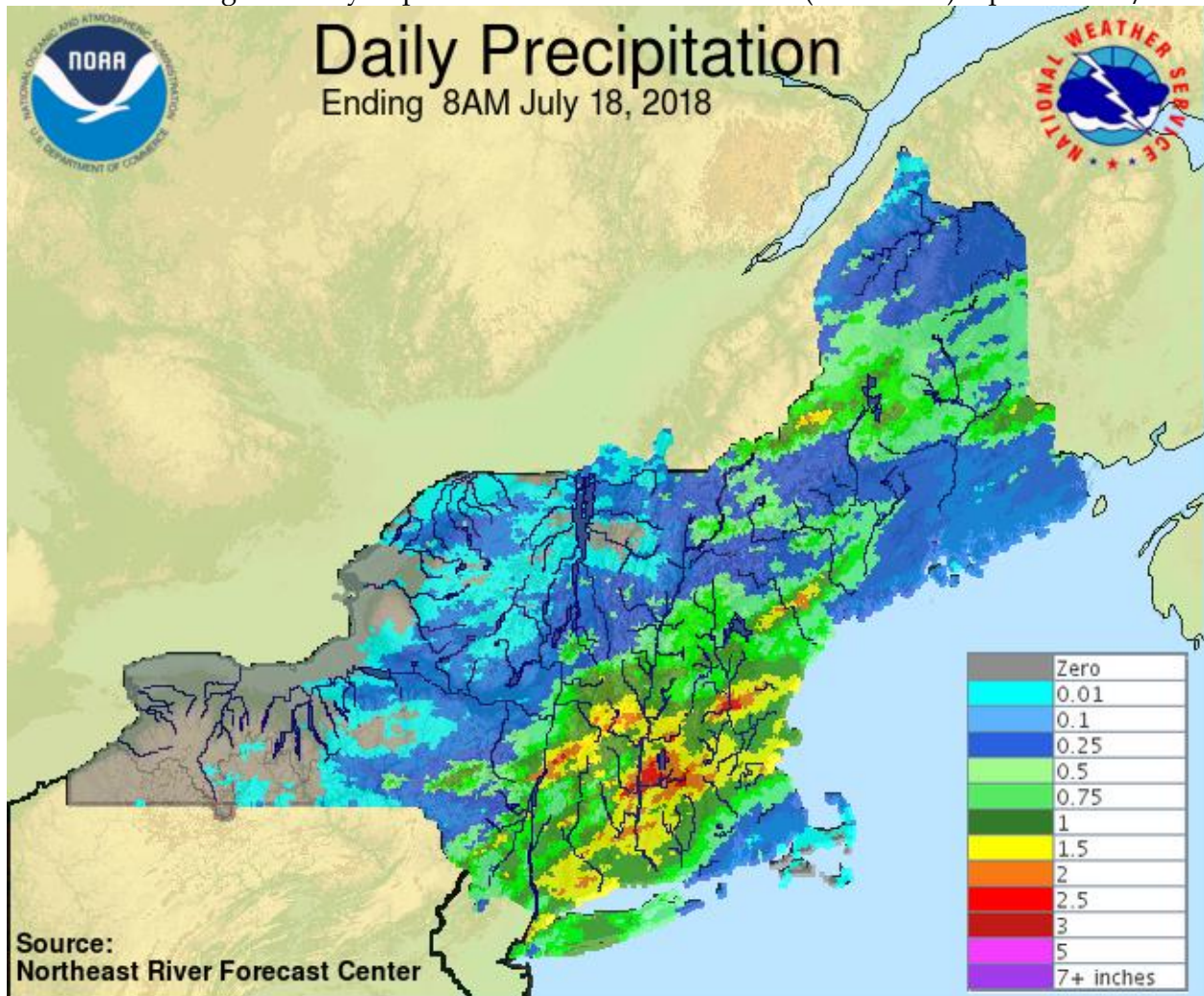
July started with a heat wave but dry through the 4<sup>th</sup> of July. A morning thunderstorm in some areas for July 7<sup>th</sup>. More dry conditions through the 17<sup>th</sup>.

The 17<sup>th</sup> gets a more detailed mention along with the map included on the next page. 10 observers submitted Significant Weather Reports from one end of our area to the other, from 1pm to 7pm, giving the National Weather Service your real-time reports, and a better understanding to the Flash Flood potential. The week of July 22<sup>nd</sup> was an overcast, humid and rain frequented week. Two small tornadoes in Worcester County on July 26<sup>th</sup>. Rain free for the last two days of July.

Take in this next section of your reports with appreciation of your efforts.

## From your reports for July 2018

Observers reporting	351
Reported all 31 days	175
Completed by Multi-Day Reports	40
Missing 1 or 2 reports	39
Daily Reports	8559
Zero Reports	5430
Non-Zero Reports	3129
Daily Comments	1376
Multi-Day Reports	184
Condition Monitoring Reports	45
Significant Weather Reports	22
Hail Reports	0
Snowfall Reports	4868
Snow Depth Reports	2135
Highest Daily Report	3.39" from Plainfield MA (MA-HS-14) reported on 7/26





By far, the most variable list put together for one month. Over 6” in the Connecticut River area of Massachusetts with over 10” in Conway, Plainfield and Westhampton. Less than 1” on Cape Cod and around Narragansett Bay.

215 stations listed is another good showing. With the weblink shown in the earlier article, you have your own way to check for missing reports.

For a viewing explanation on Watersheds, the CoCoRaHS animated video is on [YouTube](#).

01070004	Nashua			
0107000401	North Nashua River	MA-WR-44	Westminster 0.6 WSW	4.91"
0107000401	North Nashua River	MA-WR-8	Fitchburg 1.6 SSW	4.78"
0107000401	North Nashua River	MA-WR-52	Fitchburg 2.3 N	5.30"
0107000401	North Nashua River	MA-WR-22	Fitchburg 2.0 NNE	5.34"
0107000402	Headwaters Nashua River	MA-WR-58	Lunenburg 0.6 NE	3.67"
0107000402	Headwaters Nashua River	MA-MD-25	Ayer 0.1 SW	4.15"
0107000403	Squannacook River	MA-MD-47	West Townsend 0.5 W	7.21"
01070005	Concord			
0107000501	Sudbury River	MA-MD-89	Sudbury 3.6 W	4.73"
0107000501	Sudbury River	MA-MD-75	Sherborn 2.3 WNW	4.92"
0107000501	Sudbury River	MA-MD-100	Sudbury 1.6 N	3.85"
0107000501	Sudbury River	MA-MD-88	Wayland 2.1 SSE	4.34"
0107000502	Concord River	MA-WR-28	Berlin 1.3 WSW	5.01"
0107000502	Concord River	MA-WR-18	Northborough 0.6 SSE	5.51"
0107000502	Concord River	MA-WR-42	Northborough 2.3 N	4.89"
0107000502	Concord River	MA-WR-55	Harvard 2.1 S	4.22"
0107000502	Concord River	MA-MD-12	Acton 1.3 SW	4.55"
0107000502	Concord River	MA-MD-51	Maynard 0.7 ESE	4.65"
0107000502	Concord River	MA-MD-62	Chelmsford 1.2 E	3.62"
0107000502	Concord River	MA-MD-34	Chelmsford 2.0 ENE	3.72"
0107000502	Concord River	MA-MD-60	Billerica 2.0 W	3.61"
01070006	Merrimack River			
0107000612	Stony Brook - Merrimack River	MA-MD-105	Littleton 0.9 WSW	4.48"
0107000612	Stony Brook - Merrimack River	MA-MD-93	Westford 1.5 SSW	3.89"
0107000613	Shawsheen River	MA-MD-52	Lexington 0.6 SW	3.56"
0107000613	Shawsheen River	MA-MD-96	Lexington 0.3 NE	2.67"
0107000613	Shawsheen River	MA-ES-48	Andover 0.6 E	3.76"
0107000614	Powwow River - Merrimack River	MA-ES-20	Haverhill 0.7 N	4.65"
0107000614	Powwow River - Merrimack River	MA-ES-27	Amesbury 1.2 ENE	4.24"
01080201	Middle Connecticut			
0108020106	Manhan River - Connecticut River	MA-HS-2	Westhampton 1.8 SW	10.14"

0108020106	Manhan River - Connecticut River	MA-HS-8	Williamsburg 1.2 WSW	7.74"
0108020106	Manhan River - Connecticut River	MA-HS-26	Easthampton 0.5 SW	6.66"
0108020106	Manhan River - Connecticut River	MA-FR-12	Sunderland 1.3 SE	7.02"
0108020107	Batchelor Brook - Connecticut River	MA-HD-13	Springfield 4.1 W	8.01"
01080202	Miller			
0108020201	Upper Millers River	NH-CH-20	Rindge 3.2 ESE	6.24"
0108020202	Lower Millers River	MA-WR-40	Gardner 1.4 SSW	7.32"
01080203	Deerfield			
0108020305	Lower Deerfield River	MA-FR-17	Buckland 1.8 ESE	9.72"
0108020305	Lower Deerfield River	MA-FR-13	Conway 2.9 NW	10.17"
0108020305	Lower Deerfield River	MA-FR-25	Conway 2.7 NW	10.28"
0108020305	Lower Deerfield River	MA-FR-10	Conway 0.9 SW	7.95"
01080204	Chicopee			
0108020402	Ware River	MA-WR-54	Barre 1.4 NNE	6.61"
0108020404	Chicopee River	MA-HD-25	Ludlow 2.3 SW	6.16"
01080205	Lower Connecticut			
0108020501	Mill River-Connecticut River	CT-HR-57	Suffield Depot 3.3 NNE	5.32"
0108020502	Scantic River	CT-TL-26	Broad Brook 2.6 ESE	6.20"
0108020502	Scantic River	MA-HD-20	Wilbraham 3.7 SSW	5.54"
0108020502	Scantic River	CT-TL-15	Central Somers 0.3 N	4.10"
0108020503	Park River	CT-HR-39	Farmington 1.6 SW	6.07"
0108020503	Park River	CT-HR-49	West Hartford 1.1 W	4.14"
0108020503	Park River	CT-HR-11	West Hartford 2.7 SSE	8.45"
0108020504	Hockanum River	CT-HR-52	Central Manchester 0.8 N	5.78"
0108020504	Hockanum River	CT-TL-19	Vernon 2.8 N	4.24"
0108020505	Roaring Brook - Connecticut River	CT-HR-6	Wethersfield 1.2 WSW	5.82"
0108020505	Roaring Brook - Connecticut River	CT-HR-51	Wethersfield 1.3 S	4.77"
0108020505	Roaring Brook - Connecticut River	CT-HR-68	Rocky Hill 1.3 E	6.00"
0108020505	Roaring Brook - Connecticut River	CT-HR-22	East Hartford 1.3 E	8.66"
0108020506	Mattabesset River	CT-HR-15	Southington 3.0 E	4.72"
0108020507	Higganum Creek - Connecticut River	CT-MD-2	Portland 0.9 S	6.00"
0108020507	Higganum Creek - Connecticut River	CT-MD-23	Higganum 0.7 N	5.58"
0108020509	Eightmile River-Connecticut River	CT-MD-18	Essex Village 0.9 S	4.68"
01080206	Westfield			
0108020601	Headwaters Westfield River	MA-HS-14	Plainfield 2.4 ESE	10.48"
01080207	Farmington			
0108020701	Still River	CT-LT-15	Colebrook 1.0 NE	6.21"
0108020702	West Branch Farmington River	CT-LT-18	New Hartford Center 1.5 N	7.12"
0108020704	Headwaters Farmington River	CT-LT-9	New Hartford Center 3.2 SW	6.99"
0108020704	Headwaters Farmington River	CT-HR-71	Bristol 2.7 NNE	5.62"
0108020704	Headwaters Farmington River	CT-HR-28	North Canton 0.8 SSW	7.11"
0108020705	Salmon Brook	CT-HR-8	North Granby 1.3 ENE	7.34"

01090001	Charles			
0109000101	Plum Island Sound - Frontal Atlantic Ocean	MA-ES-24	Newburyport 0.8 SW	2.79"
0109000102	Ipswich River	MA-MD-85	Wilmington 2.2 WNW	4.27"
0109000102	Ipswich River	MA-MD-45	Wilmington 1.5 NE	4.79"
0109000102	Ipswich River	MA-ES-12	Boxford 2.4 S	4.05"
0109000102	Ipswich River	MA-ES-2	Beverly 2.8 NW	3.90"
0109000103	Essex River - Frontal Atlantic Ocean	MA-ES-41	Danvers 0.8 ESE	3.46"
0109000104	Saugus River - Frontal Broad Sound	MA-MD-81	Wakefield 0.5 NNW	3.72"
0109000104	Saugus River - Frontal Broad Sound	MA-ES-45	Nahant 0.4 N	3.23"
0109000104	Saugus River - Frontal Broad Sound	MA-ES-8	Marblehead 0.8 SW	4.42"
0109000105	Mystic River - Frontal Boston Harbor	MA-MD-7	Winchester 0.7 SE	3.57"
0109000105	Mystic River - Frontal Boston Harbor	MA-MD-44	Medford 1.2 W	3.62"
0109000105	Mystic River - Frontal Boston Harbor	MA-MD-11	Cambridge 0.9 NNW	4.13"
0109000105	Mystic River - Frontal Boston Harbor	MA-SF-10	Chelsea 0.8 N	3.67"
0109000106	Upper Charles River	MA-WR-1	Milford 2.3 NNW	5.96"
0109000106	Upper Charles River	MA-MD-106	Holliston 2.4 W	5.85"
0109000106	Upper Charles River	MA-MD-42	Holliston 0.8 S	5.88"
0109000107	Lower Charles River - Frontal Boston Harbor	MA-MD-80	Lincoln 1.5 SW	4.40"
0109000107	Lower Charles River - Frontal Boston Harbor	MA-MD-119	Watertown 1.1 W	3.85"
0109000108	Neponset River - Frontal Boston Harbor	MA-NF-1	Norwood 1.3 NW	4.04"
0109000108	Neponset River - Frontal Boston Harbor	MA-SF-17	Dorchester 1.8 ENE	3.64"
0109000109	Whitmans Pond - Frontal Boston Harbor	MA-NF-32	Quincy 1.8 WSW	3.69"
0109000109	Whitmans Pond - Frontal Boston Harbor	MA-NF-36	Weymouth 2.7 NNW	3.12"
0109000109	Whitmans Pond - Frontal Boston Harbor	MA-PL-36	Hingham 0.8 ESE	3.01"
01090002	Cape Cod			
0109000201	North River - Frontal Massachusetts Bay	MA-PL-5	Kingston 3.3 WNW	2.11"
0109000201	North River - Frontal Massachusetts Bay	MA-PL-30	Duxbury 3.7 W	2.38"
0109000202	Cape Cod	MA-BA-2	Falmouth 3.1 NNW	0.81"
0109000202	Cape Cod	MA-BA-57	Falmouth 5.7 N	0.94"
0109000202	Cape Cod	MA-BA-50	Falmouth 5.4 NNE	0.70"
0109000202	Cape Cod	MA-BA-17	East Falmouth 1.2 WNW	1.10"
0109000202	Cape Cod	MA-BA-19	East Falmouth 0.7 NW	1.38"
0109000202	Cape Cod	MA-BA-3	Falmouth 3.0 E	1.05"
0109000202	Cape Cod	MA-BA-11	East Falmouth 1.4 ESE	2.17"
0109000202	Cape Cod	MA-BA-47	Mashpee 2.4 WSW	1.67"
0109000202	Cape Cod	MA-BA-45	Sandwich 0.9 NNE	2.04"
0109000202	Cape Cod	MA-BA-10	East Sandwich 2.3 SE	2.42"
0109000202	Cape Cod	MA-BA-59	Barnstable 3.6 W	0.95"
0109000202	Cape Cod	MA-BA-22	Yarmouth 0.9 NNW	1.08"
0109000202	Cape Cod	MA-BA-33	Brewster 1.5 ESE	1.17"
0109000202	Cape Cod	MA-BA-52	Truro 0.8 E	1.16"
0109000202	Cape Cod	MA-BA-36	Harwich 2.6 ENE	0.80"

0109000202	Cape Cod	MA-BA-51	Orleans 3.0 S	0.82"
0109000202	Cape Cod	MA-BA-12	Orleans 1.1 E	0.91"
0109000202	Cape Cod	MA-BA-30	Eastham 0.6 SW	1.05"
0109000202	Cape Cod	MA-BA-43	Chatham 0.4 WSW	1.20"
0109000202	Cape Cod	MA-BA-65	Chatham 0.2 SSE	0.90"
0109000203	Mattapoissett River - Frontal Buzzards Bay	MA-PL-19	Rochester 1.2 NNW	1.39"
0109000204	Paskamanset River - Frontal Buzzards Bay	MA-BR-14	Dartmouth 2.5 SSW	1.05"
0109000205	Sakonnet Point - Frontal Rhode Island Sound	RI-NW-7	Little Compton 0.6 E	1.25"
0109000206	Elizabeth Islands - Marthas Vineyard	MA-DK-5	West Tisbury 2.9 N	1.43"
0109000207	Nantucket Island	MA-NT-1	Nantucket 3.8 WNW	1.40"
01090003	Blackstone			
0109000301	Upper Blackstone River	MA-WR-41	Auburn 2.6 SW	6.77"
0109000301	Upper Blackstone River	MA-WR-43	Leicester 2.4 ESE	5.50"
0109000302	Lower Blackstone River	RI-PR-50	Harrisville 1.2 SSE	4.55"
0109000302	Lower Blackstone River	RI-PR-28	North Smithfield 0.7 SE	4.55"
0109000302	Lower Blackstone River	RI-PR-45	Manville 0.4 WSW	5.17"
0109000302	Lower Blackstone River	MA-NF-26	Bellingham 2.4 S	4.30"
0109000302	Lower Blackstone River	RI-PR-59	Cumberland Hill 0.9 NW	4.61"
0109000302	Lower Blackstone River	RI-PR-55	Cumberland Hill 3.3 NE	4.27"
01090004	Narragansett			
0109000401	Upper Taunton River	MA-BR-30	Taunton 3.9 N	2.40"
0109000401	Upper Taunton River	MA-NF-31	Stoughton 1.2 E	4.89"
0109000401	Upper Taunton River	MA-PL-22	East Bridgewater 0.3 WSW	2.66"
0109000401	Upper Taunton River	MA-PL-15	Abington 1.2 NNE	2.89"
0109000401	Upper Taunton River	MA-PL-23	Pembroke 2.8 SW	2.55"
0109000402	Middle Taunton River	MA-PL-31	Bridgewater 1.8 SE	2.93"
0109000402	Middle Taunton River	MA-PL-17	Plympton 0.9 NNE	1.67"
0109000403	Threemile River	MA-NF-19	Foxborough 1.8 SSW	3.52"
0109000403	Threemile River	MA-BR-55	NWS Boston/Norton 2.5 ESE	3.18"
0109000403	Threemile River	MA-BR-33	Taunton 2.4 W	2.47"
0109000404	Ten Mile River	MA-BR-23	Attleboro 0.9 ENE	2.93"
0109000405	Wonnasquatucket River-Moshassuck River	RI-PR-33	Greenville 0.7 NNW	2.86"
0109000405	Woonasquatucket River-Moshassuck River	RI-PR-51	North Smithfield 0.6 S	4.32"
0109000405	Woonasquatucket River-Moshassuck River	RI-PR-53	Providence 1.7 N	1.70"
0109000406	Pawtuxet River	RI-PR-57	Cranston 1.2 SSE	1.73"
0109000406	Pawtuxet River	RI-PR-17	Cranston 4.1 E	1.58"
0109000407	Palmer River	MA-BR-2	Rehoboth 2.1 N	1.85"
0109000408	Lower Taunton River - Frontal Mount Hope Bay	MA-BR-3	Norton 1.8 NNE	2.70"
0109000408	Lower Taunton River - Frontal Mount Hope Bay	MA-BR-16	Somerset 0.4 SSE	1.23"
0109000408	Lower Taunton River - Frontal Mount Hope Bay	MA-BR-8	Dighton 1.1 WSW	1.75"
0109000409	Narragansett Bay	RI-KN-17	East Greenwich 1.2 NNE	2.00"
0109000409	Narragansett Bay	RI-WS-31	Kingston 7.5 NNE	1.91"

0109000409	Narragansett Bay	RI-WS-44	North Kingston 1.5 SSW	1.52"
0109000409	Narragansett Bay	RI-KN-2	East Greenwich 2.3 ESE	1.13"
0109000409	Narragansett Bay	RI-PR-32	Providence 2.3 NE	1.62"
0109000409	Narragansett Bay	RI-NW-18	Jamestown 0.3 SSE	0.92"
0109000409	Narragansett Bay	RI-BR-5	Barrington 1.3 WNW	0.92"
0109000409	Narragansett Bay	RI-NW-4	Middletown 1.1 SW	0.67"
0109000409	Narragansett Bay	RI-NW-16	Portsmouth 1.3 S	1.45"
0109000409	Narragansett Bay	RI-NW-20	Tiverton 1.0 SSW	0.90"
01090005	Pawcatuck-Wood			
0109000501	Wood River	RI-WS-1	Hope Valley 3.7 S	2.77"
0109000502	Upper Pawcatuck River	RI-WS-46	Westerly 3.4 E	1.73"
0109000502	Upper Pawcatuck River	RI-WS-42	Richmond 4.6 NNE	2.25"
0109000502	Upper Pawcatuck River	RI-WS-32	Kingston 6.9 NNW	2.03"
0109000502	Upper Pawcatuck River	RI-WS-40	West Warwick 7.7 S	2.25"
0109000503	Lower Pawcatuck River	CT-NL-40	Pawcatuck 1.8 SSE	3.43"
0109000503	Lower Pawcatuck River	RI-WS-47	Westerly 0.8 WNW	3.05"
01100001	Quinebaug			
0110000102	French River	MA-WR-68	Oxford 0.9 SSW	5.24"
0110000103	Fivemile River	CT-WN-6	Dayville 2.0 ENE	4.04"
0110000103	Fivemile River	CT-WN-4	East Killingly 1.3 SW	3.68"
0110000105	Mossup River	CT-WN-8	Moosup 1.7 NE	4.27"
0110000106	Pachaug River	CT-NL-21	Griswold 0.9 N	4.02"
01100002	Shetucket			
0110000201	Willimantic River	CT-TL-18	Hebron 5.3 NW	7.80"
0110000201	Willimantic River	CT-TL-2	Staffordville 0.4 NNW	5.44"
0110000202	Natchaug River	CT-TL-27	Willington 2.7 SE	5.87"
0110000202	Natchaug River	CT-WN-12	Eastford 2.0 W	5.67"
0110000203	Shetucket River	CT-WN-10	South Windham 1.3 NNE	4.82"
0110000203	Shetucket River	CT-NL-10	Norwich 2.5 NNE	4.50"
0110000203	Shetucket River	CT-NL-28	Lisbon 2.0 SW	3.86"
01100003	Thames			
0110000302	Thames River-Frontal New London Harbor	CT-NL-5	Oakdale 2.6 WNW	5.36"
0110000302	Thames River-Frontal New London Harbor	CT-NL-6	New London 1.0 NNW	5.02"
0110000303	Mystic River - Frontal Fishers Island Sound	CT-NL-29	East Lyme 0.5 SW	4.66"
0110000303	Mystic River - Frontal Fishers Island Sound	CT-NL-32	Niantic 1.1 SW	3.46"
0110000303	Mystic River - Frontal Fishers Island Sound	CT-NL-22	Central Waterford 2.7 SSW	3.27"
0110000303	Mystic River - Frontal Fishers Island Sound	CT-NL-37	Mystic 1.6 W	2.92"
0110000303	Mystic River - Frontal Fishers Island Sound	CT-NL-19	Mystic 0.9 W	2.87"
0110000303	Mystic River - Frontal Fishers Island Sound	CT-NL-24	Stonington 1.4 NNW	2.91"
0110000303	Mystic River - Frontal Fishers Island Sound	CT-NL-18	Stonington 0.5 NNE	2.89"
01100004	Quinnipiac			
0110000401	Quinnipiac River	CT-NH-14	Prospect 1.9 ENE	4.90"

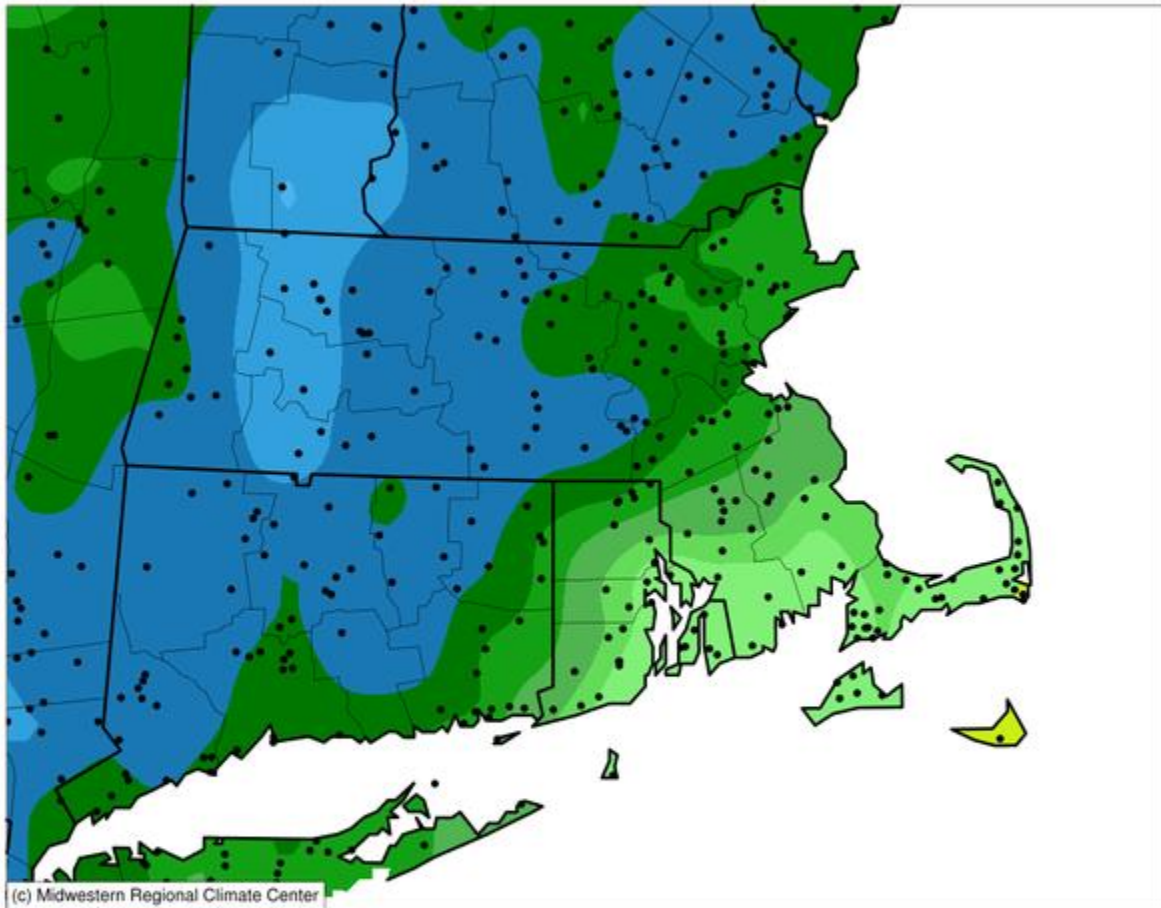


0110000401	Quinnipiac River	CT-HR-55	Southington 1.7 WNW	5.87"
0110000401	Quinnipiac River	CT-HR-23	Southington 0.9 SSE	4.57"
0110000401	Quinnipiac River	CT-NH-44	Wallingford Center 1.9 WNW	3.99"
0110000401	Quinnipiac River	CT-NH-43	Wallingford Center 3.3 NNW	3.62"
0110000402	Hammonasset River - Frontal Long Island Sound	CT-NH-21	East Haven 3.5 SSW	4.71"
0110000402	Hammonasset River - Frontal Long Island Sound	CT-NH-41	Madison Center 1.6 W	4.36"
0110000402	Hammonasset River - Frontal Long Island Sound	CT-NH-50	Madison Center 4.1 N	4.59"
0110000402	Hammonasset River - Frontal Long Island Sound	CT-MD-21	Killingworth 2.6 ESE	5.66"
0110000403	Mill River - Frontal Long Island Sound	CT-NH-16	Milford 1.8 E	4.63"
01100005	Housatonic			
0110000501	Headwaters Housatonic River	MA-BE-11	Great Barrington 3.0 N	5.11"
0110000501	Headwaters Housatonic River	MA-BE-10	Pittsfield 2.0 NNW	5.24"
0110000501	Headwaters Housatonic River	MA-BE-5	Tyringham 1.5 WNW	6.01"
0110000504	Macedonia Brook - Housatonic River	CT-LT-20	Warren 2.4 WNW	7.08"
0110000506	Candlewood Lake-Housatonic River	CT-LT-22	New Milford 5.3 SSW	6.27"
0110000508	Still River - Housatonic River	CT-FR-43	Bethel 0.5 E	6.10"
0110000508	Still River - Housatonic River	CT-FR-41	Bethel 3.5 NNE	6.49"
0110000508	Still River - Housatonic River	CT-FR-9	Brookfield 3.3 SSE	5.28"
0110000509	Pomperaug River	CT-LT-16	Woodbury Center 1.9 WNW	8.27"
0110000510	Eightmile Brook - Housatonic River	CT-FR-44	Newtown 4.3 E	7.77"
0110000511	Headwaters Naugatuck River	CT-LT-7	Litchfield 2.3 NNE	6.12"
0110000512	Outlet Naugatuck River	CT-NH-47	Seymour 1.5 NE	6.53"
0110000512	Outlet Naugatuck River	CT-NH-45	Naugatuck 1.7 NNE	5.13"
0110000512	Outlet Naugatuck River	CT-NH-22	Prospect 0.5 SW	5.04"
0110000513	Housatonic River - Frontal Long Island Sound	CT-FR-42	Monroe 0.1 SE	7.06"
0110000513	Housatonic River - Frontal Long Island Sound	CT-FR-23	Shelton 1.3 W	6.06"
01100006	Saugatuck			
0110000601	Saugatuck River - Frontal Long Island Sound	CT-FR-31	Newtown 4.6 SSW	8.06"
0110000602	Norwalk River - Frontal Norwalk Harbor	CT-FR-29	Ridgefield 1.9 SSE	4.83"
0110000602	Norwalk River - Frontal Norwalk Harbor	CT-FR-3	New Canaan 1.9 ENE	4.74"
0110000602	Norwalk River - Frontal Norwalk Harbor	CT-FR-25	Norwalk 2.9 NNW	4.48"
0110000603	Pequonnock River - Frontal Long Island Sound	CT-FR-20	Westport 2.5 ENE	5.76"
0110000603	Pequonnock River - Frontal Long Island Sound	CT-FR-57	Trumbull 0.9 W	5.40"
0110000603	Pequonnock River - Frontal Long Island Sound	CT-FR-32	Monroe 0.8 W	8.33"
0110000604	Mianus River-Rippowam River	CT-FR-39	Stamford 4.2 S	4.15"
0110000604	Mianus River-Rippowam River	CT-FR-50	Darien 2.8 NW	4.22"
02020003	Hudson-Hoosic			
0202000306	Upper Hoosic River	MA-BE-18	North Adams 3.0 WNW	5.93"
02030203	Long Island Sound			
0203020300	Long Island Sound	NY-SF-114	Fishers Island 0.5 NE	2.71"

The color scaling looks the same, as it has in previous months, but do look at the scale. The dark blue color is over 5", the next lighter shade of blue is over 7.5". The palest of green, around Narragansett Bay and Cape Cod, is less than 1".

### Accumulated Precipitation (in)

July 01, 2018 to July 31, 2018



0.01 0.1 0.5 1 1.5 2 3 4 5 7.5 10 12.5 15

Stations from the following networks used: COOP, FAA, CoCoRaHS,

Midwestern Regional Climate Center

cli-MATE: MRCC Application Tools Environment

Generated at: 8/8/2018 8:30:19 PM CDT

**“We do not live at the airport”**

Variability among the airports too. But do compare your station’s total to a nearby airport.

Our network does not use automated gauges. And we do not live at the airport!

Location	Station ID	July 2018 Precip	July departure from normal	May-Jun-Jul Precip	3 month departure from normal	Feb-Jul Precip	6 month departure from normal	Aug-Jul Precip	12 month departure from normal
White Plains NY	HPN	4.21"	0.50"	11.06"	-1.02"	23.90"	-0.09"	38.07"	-11.28"
Danbury CT	DXR	6.79"	2.21"	14.29"	0.79"	26.11"	1.50"	41.70"	-8.17"
New Haven CT	HVN	4.06"	0.05"	9.34"	-2.86"	22.74"	-1.08"	37.73"	-9.38"
Meriden CT	MMK	3.87"	-0.14"	9.36"	-2.84"	23.79"	-0.03"	42.71"	-4.40"
Hartford CT	HFD	7.20"	3.20"	12.29"	0.41"	25.19"	3.21"	43.93"	0.33"
Willimantic CT	IJD	3.01"	-1.08"	7.43"	-4.70"	20.53"	-3.43"	39.06"	-9.36"
New London CT	GON	4.19"	0.42"	9.58"	-2.15"	18.75"	-4.41"	33.45"	-13.04"
Westerly RI	WST	2.02"	-1.77"	6.30"	-4.96"	20.17"	-3.56"	40.96"	-6.43"
Newport RI	UUU	0.89"	-2.56"	4.51"	-6.28"	20.07"	-2.92"	41.06"	-5.27"
New Bedford MA	EWB	0.95"	-2.37"	5.06"	-5.90"	22.02"	-1.99"	45.92"	-2.44"
Hyannis MA	HYA	1.24"	-2.00"	5.91"	-4.38"	21.94"	-1.35"	51.28"	3.59"
Nantucket MA	ACK	0.52"	-2.57"	6.43"	-3.57"	26.95"	6.24"	56.97"	12.55"
Marthas Vineyard MA	MVY	1.98"	-0.93"	6.64"	-2.90"	20.31"	-0.83"	44.49"	-0.67"
Taunton MA	TAN	1.97"	-1.78"	6.85"	-4.12"	25.05"	0.80"	46.58"	-3.16"
Plymouth MA	PYM	1.36"	-2.13"	6.92"	-4.21"	23.91"	-0.71"	46.75"	-2.40"
Norwood MA	OWD	3.39"	-0.39"	6.97"	-4.44"	22.65"	-0.65"	42.37"	-4.69"
Bedford MA	BED	4.00"	0.28"	9.37"	-2.12"	21.33"	-1.51"	35.86"	-9.85"
Beverly MA	BVY	3.47"	-0.39"	8.63"	-2.67"	22.45"	-1.06"	35.74"	-10.44"
Lawrence MA	LWM	2.93"	-0.74"	8.09"	-3.41"	16.64"	-5.59"	31.59"	-11.57"
Fitchburg MA	FIT	3.49"	-0.59"	9.99"	-2.40"	21.97"	-1.92"	43.94"	-3.20"
Westfield MA	BAF	6.99"	2.90"	14.33"	1.45"	25.96"	1.78"	44.35"	-4.04"
North Adams MA	AQW	5.19"	0.64"	9.78"	-3.84"	17.47"	-6.10"	34.49"	-12.12"

July 2018 as a calendar. A count of your Daily Reports by Date. Magenta colors are for the highest counts. Lime green color for the lowest counts.

Our average was 276 Daily Reports per day. Lots of green, and one bright magenta day for the rain on the 17<sup>th</sup>. 313 Daily Reports on July 18<sup>th</sup> is shy of the record of 317 Daily Reports set on May 16<sup>th</sup> of this year.

### July 2018

Sun	Mon	Tue	Wed	Thu	Fri	Sat
1 270	2 269	3 267	4 272	5 264	6 272	7 284
8 265	9 264	10 270	11 282	12 273	13 268	14 270
15 277	16 269	17 272	18 313	19 276	20 276	21 276
22 279	23 281	24 276	25 279	26 294	27 282	28 285
29 281	30 276	31 277				

From the Drought Monitor.

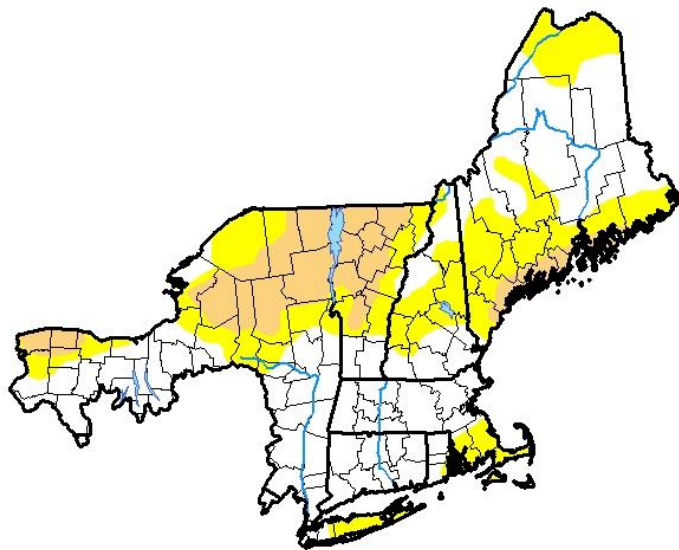
D0 has been removed from western and central parts of Massachusetts and Connecticut and has been introduced to southeastern Massachusetts, Cape Cod and the Islands.

Pleased to see so many Condition Monitoring Reports again in July.

Every drop counts and zeros do too!

## U.S. Drought Monitor Northeast RFC

**August 7, 2018**  
(Released Thursday, Aug. 9, 2018)  
Valid 8 a.m. EDT



*Drought Conditions (Percent Area)*

	None	D0-D4	D1-D4	D2-D4	D3-D4	D4
<b>Current</b>	52.80	47.20	16.41	0.00	0.00	0.00
<b>Last Week</b> <i>07-31-2018</i>	47.51	52.49	18.35	0.00	0.00	0.00
<b>3 Months Ago</b> <i>05-08-2018</i>	100.00	0.00	0.00	0.00	0.00	0.00
<b>Start of Calendar Year</b> <i>01-02-2018</i>	88.74	11.26	0.00	0.00	0.00	0.00
<b>Start of Water Year</b> <i>09-26-2017</i>	70.12	29.88	7.74	0.00	0.00	0.00
<b>One Year Ago</b> <i>08-08-2017</i>	79.58	20.42	5.22	0.00	0.00	0.00

*Intensity:*

- D0 Abnormally Dry
- D1 Moderate Drought
- D2 Severe Drought
- D3 Extreme Drought
- D4 Exceptional Drought

*The Drought Monitor focuses on broad-scale conditions. Local conditions may vary. See accompanying text summary for forecast statements.*

*Author:*

Richard Tinker  
CPC/NOAA/NWS/NCEP



<http://droughtmonitor.unl.edu/>

For a viewing explanation on the Drought Monitor, the CoCoRaHS animated video is on [YouTube](#).



## **Wrap up**

Another call for Observer of the Month. We will start that segment in next month's newsletter.

Early August is a good time to bring up Hurricane Preparedness. Please take this time to prepare for and understand the impacts that tropical systems can have upon your locale. Every locale is different, but not immune from the impacts of wind, rising coastal waters, and flooding inland rains. [Be prepared](#). [Stay informed](#) and on a [mobile device](#). We wrote more in our newsletters of [June 2017](#) and [August 2017](#). If you have questions about Hurricane Preparedness, please ask.

We leave August and get right into Labor Day Weekend, and Labor Day Weekend is our 2<sup>nd</sup> and last [Field Photo](#) Weekend of the year. A chance to send a photo about your location instead of a report with numbers in them. Also a chance to find a place nearby to photograph the change in seasons.

The next WxTalk Webinar is scheduled for September 20<sup>th</sup>, the topic is about Hail. All of these [WxTalk Webinars](#) provide some morsel of information that you never knew of or thought of before. Understand that the "H" in CoCoRaHS is for Hail, and our network's Hail database is one of a kind. Hail reports from our observers alert NWS in a minute's time, just like the Significant Weather Reports do, so please make those real-time and supplementary reports when you safely and timely can.

As we leave September, we close our Water Year and [Water Year Summaries](#) will appear afterwards. Anytime over these next two months is a good time to look over your station reporting and fill in missing reports where you can accurately do so.

Starting October 1, the "Rulers of the Snow" return, and another snow reporting season begins. July was a great month for snow reporting as we saw a big increase from last July. The opportunity is there to get into the habit of reporting snow fall and snow depth with every one of your Daily Reports. Zeros are easy and define where snow is and is not. When the snow returns, slow down and report the accurate amount.

Thank you for all that you do for CoCoRaHS, whether in the past, present and in the days to come.